

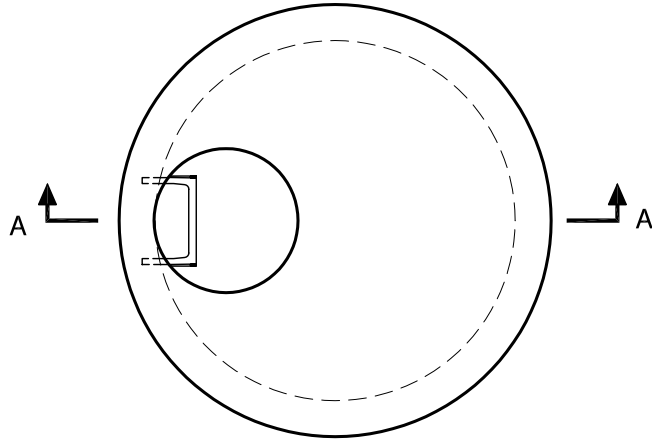
60" Manhole

Meets or Exceeds WSDOT Std Plan B-23c

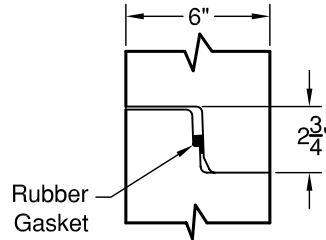
Manholes Constructed in Accordance With ASTM C-478

Rubber Gasket Conforms to ASTM C-443

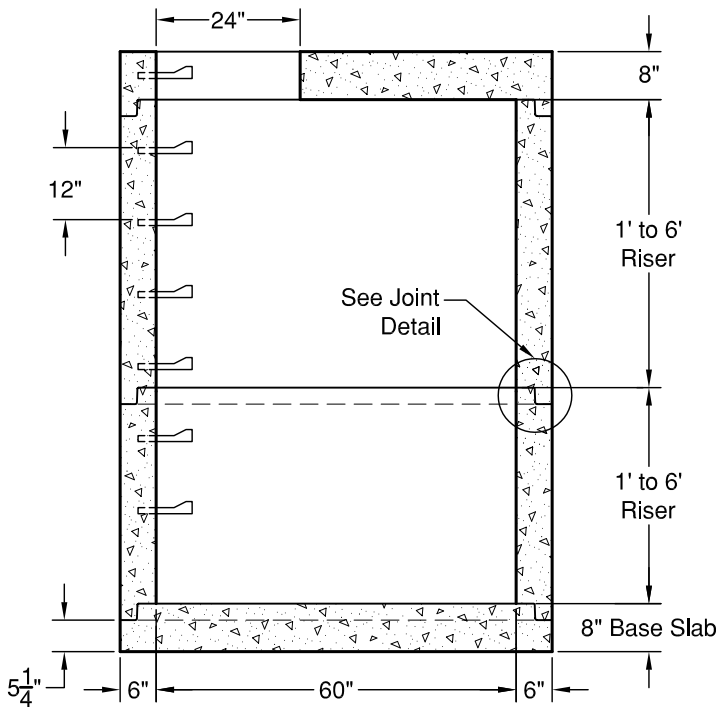
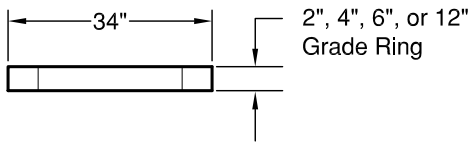
Polypropylene MH Steps Conform to ASTM C-478



PLAN VIEW



JOINT DETAIL



SECTION AA

WEIGHTS:

- TOP SLAB: 8" - 2,620 lbs
- RISER: 1' - 1,300 lbs
- 2' - 2,600 lbs
- 3' - 3,900 lbs
- 4' - 5,200 lbs
- 5' - 6,500 lbs
- 6' - 7,800 lbs
- BASE SLAB: 8" - 2,980 lbs

CONCRETE:

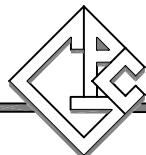
Fc = 4,000 psi @ 28 Days

REINFORCING STEEL:

- Welded Wire Fabric: ASTM A185
- Rebar: ASTM A615 Grade 60
- Riser: 0.15 Sq in./lin ft min.
- Base Slab: 0.25 Sq in./ft e.w. min.

PIPE PENETRATIONS:

- Maximum Hole Size: 48"
- Minimum Distance Hole to Hole: 8"
- Holes Cored to Plan Specifications
- Kor-N-Seal Connectors Available



GRANITE

PRECASTING & CONCRETE INC.