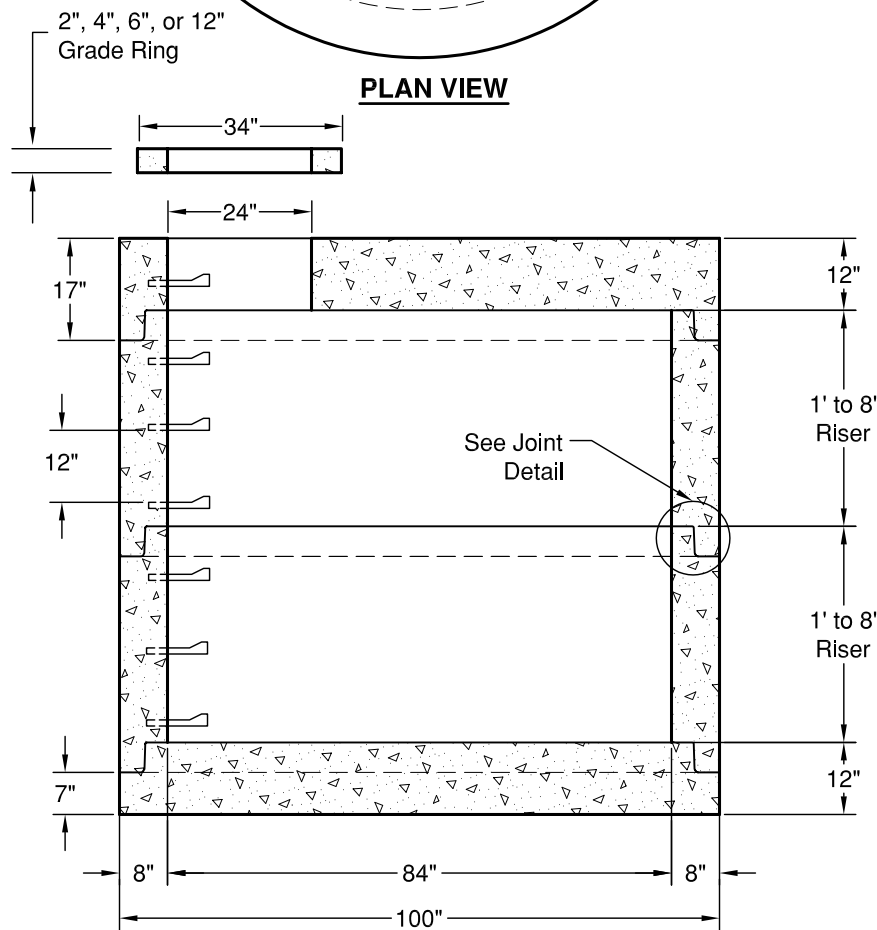
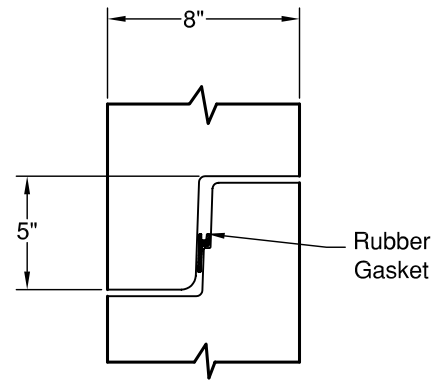
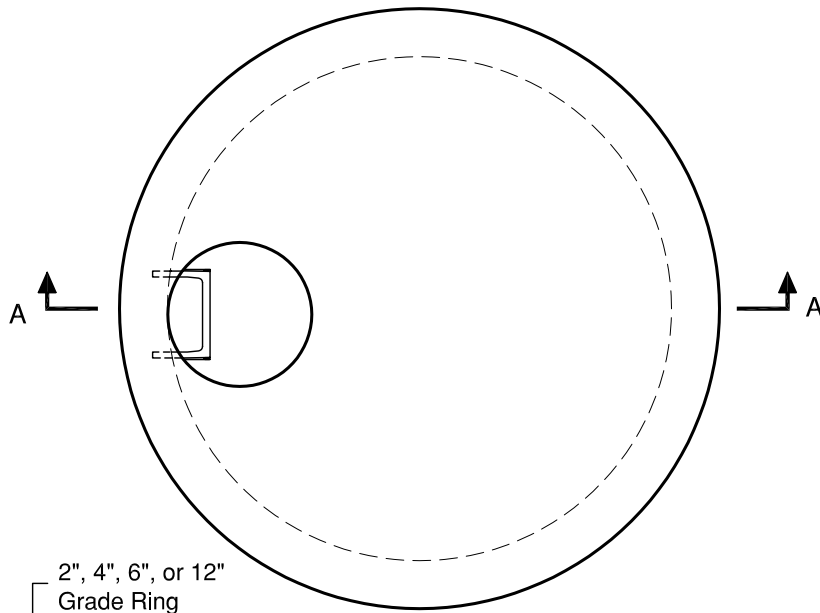


# 84" Manhole

Manholes Constructed in Accordance With ASTM C-478  
 Rubber Gasket Conforms to ASTM C-443  
 Polypropylene MH Steps Conform to ASTM C-478



### WEIGHTS:

TOP SLAB:	12" -	8,700 lbs
RISER:	1' -	2,400 lbs
	2' -	4,800 lbs
	3' -	7,200 lbs
	4' -	9,600 lbs
	5' -	12,000 lbs
	6' -	14,400 lbs
	7' -	16,800 lbs
	8' -	19,200 lbs
BASE SLAB:	12" -	7,540 lbs

### CONCRETE

F<sub>c</sub> = 4,000 psi @ 28 Days

### REINFORCING STEEL

Welded Wire Fabric: ASTM A185  
 Rebar: ASTM A615 Grade 60  
 Riser: 0.21 Sq in./lin ft min.  
 Base Slab: 0.40 Sq in./ft e.w. min.

### PIPE PENETRATIONS

Maximum Hole Size: 72"  
 Minimum Distance Hole to Hole: 12"  
 Holes Cored to Plan Specifications  
 Kor-N-Seal Connectors Available



# GRANITE

# PRECASTING & CONCRETE INC.