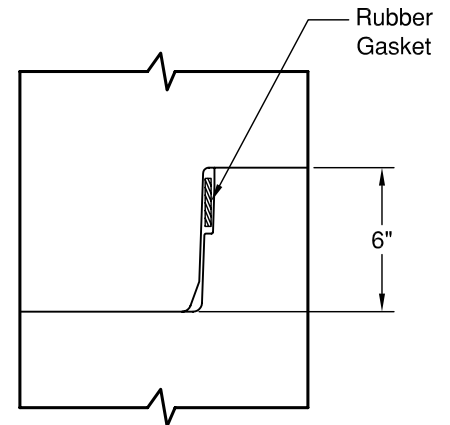
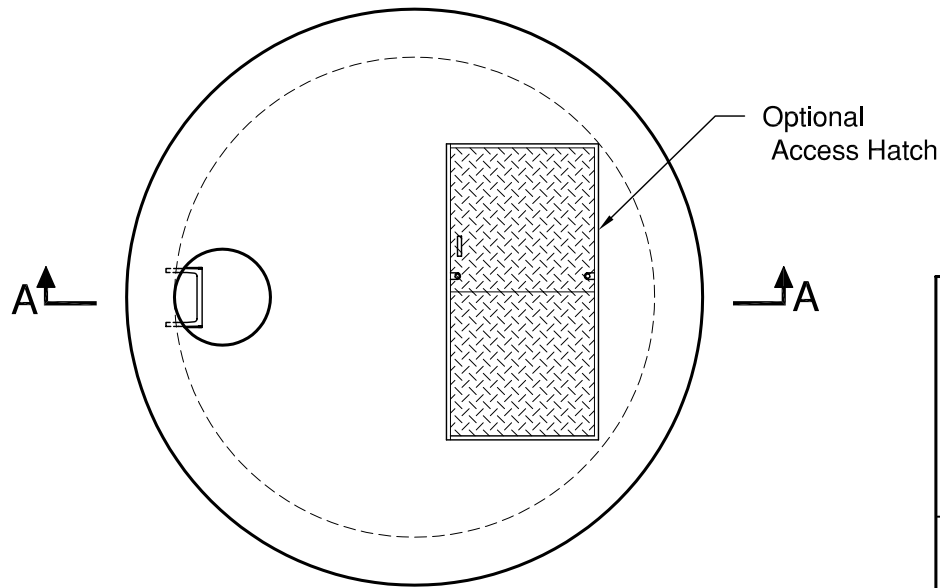


120" Manhole

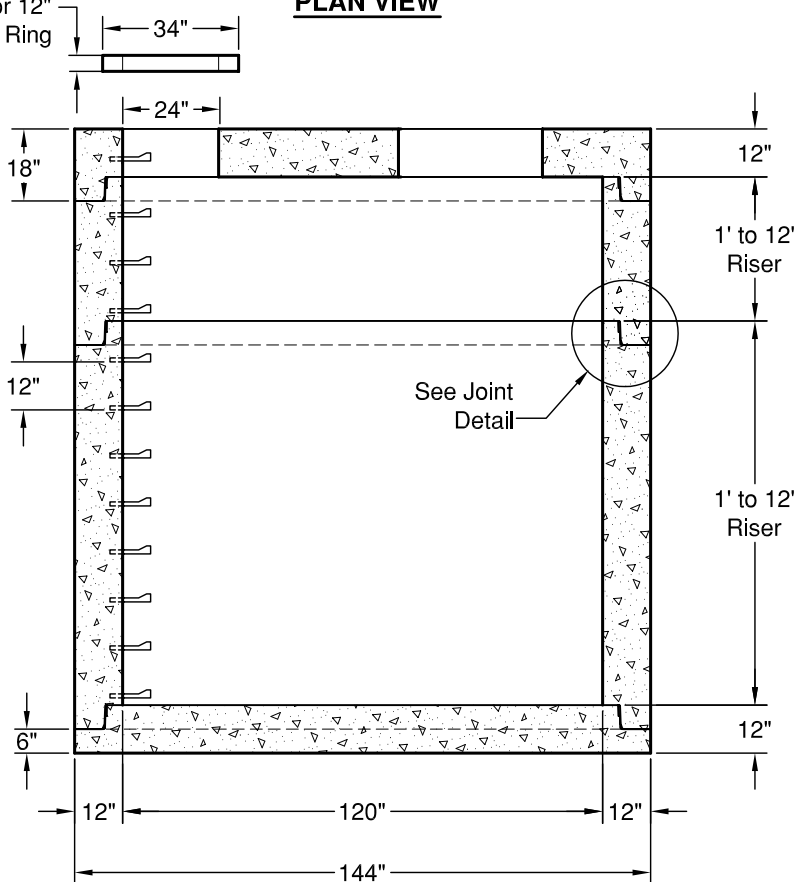
Meets or Exceeds WSDOT Std Plan B-23c
 Manholes Constructed in Accordance With ASTM C-478
 Rubber Gasket Conforms to ASTM C-443
 Polypropylene MH Steps Conform to ASTM C-478



PLAN VIEW

JOINT DETAIL

2", 4", 6", or 12"
Grade Ring



SECTION AA

WEIGHTS:

TOP SLAB: 17,600 lbs
 RISER: 5,200 lbs/ft
 BASE SLAB: 16,000 lbs

CONCRETE:

Fc= 4,000 psi @ 28 Days

REINFORCING STEEL:

Welded Wire Fabric: ASTM A185
 Rebar: ASTM A615 Grade 60
 Riser: 0.40 Sq in./lin ft min.
 Base Slab: 0.70 Sq in./ft e.w.min.

PIPE PENETRATIONS:

Maximum Hole Size: 108"
 Minimum Hole to Hole: 12"
 Holes Cored to Plan Specifications
 Kor-N-Seal Connectors Available



GRANITE

**PRECASTING &
CONCRETE INC.**