

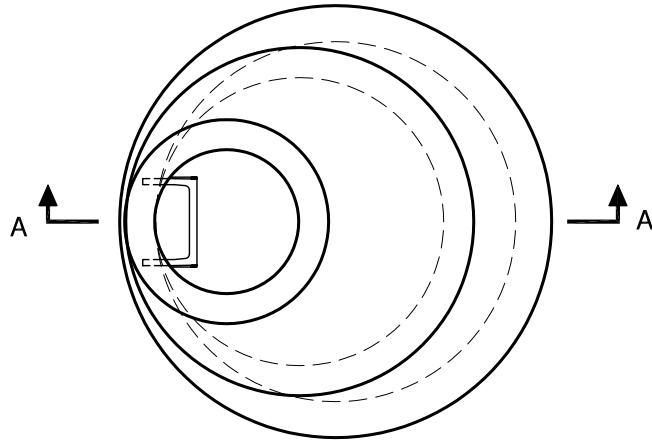
Top Slab Reducer

Meets or Exceeds WSDOT Std Plan B-23b

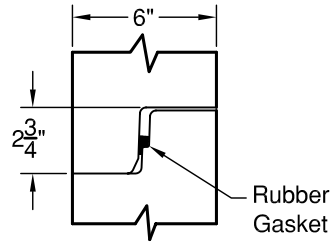
Manholes Constructed in Accordance With ASTM C-478

Rubber Gasket Conforms to ASTM C-443

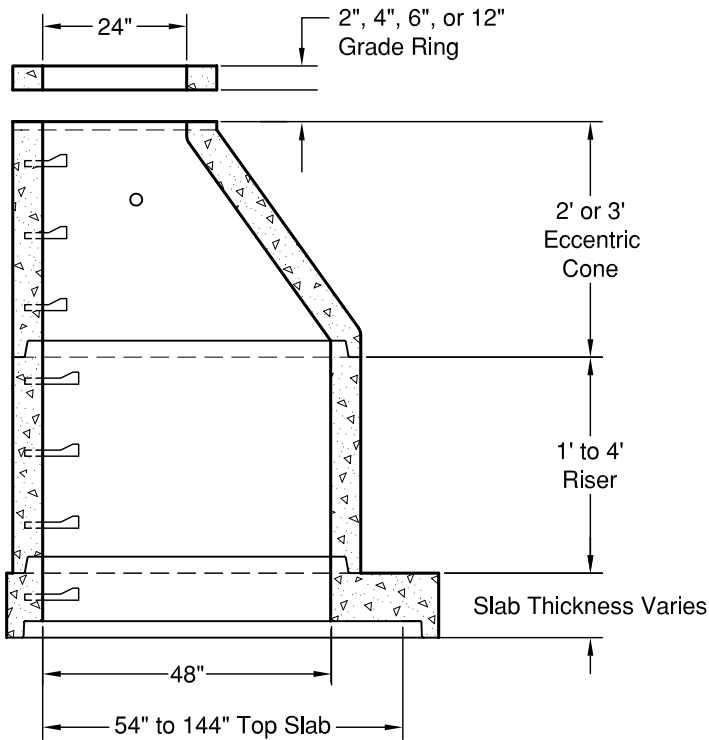
Polypropylene MH Steps Conform to ASTM C-478



PLAN VIEW



JOINT DETAIL



SECTION AA

WEIGHTS:

CONE: 2' - 1,740 lbs
3' - 2,540 lbs

RISER: 1' - 950 lbs
2' - 1,800 lbs
3' - 2,700 lbs
4' - 3,600 lbs

TOP SLAB: 54" - 997 lbs
60" - 1,677 lbs
72" - 2,677 lbs
84" - 7,286 lbs
96" - 8,646 lbs
120" - 16,186 lbs
144" - 28,116 lbs

CONCRETE:

F_c = 4,000 psi @ 28 Days

REINFORCING STEEL:

Rebar: ASTM A615 Grade 60



GRANITE

PRECASTING & CONCRETE INC.