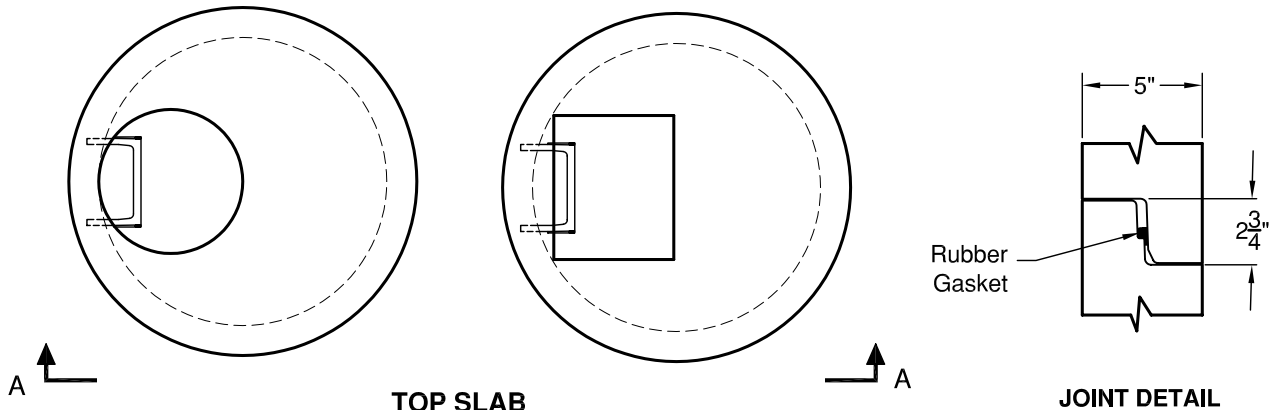
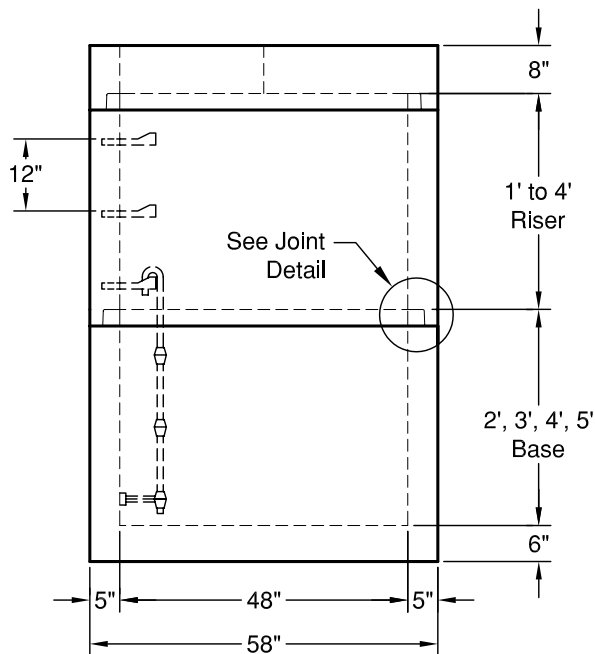
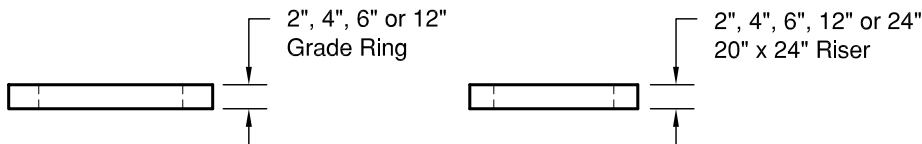


# 48" Type 1 Catch Basin

Meets or Exceeds WSDOT standard plan B-1e  
 Catch Basins Constructed in Accordance with ASTM C-478  
 Rubber Gasket Conforms to ASTM C-443  
 Polypropylene MH Steps Conform to ASTM C-478



**TOP SLAB**  
 24" Diameter Round or 20" x 24" Rectangular Hole



**ELEVATION AA**

**WEIGHTS:**

- TOP SLAB: 1,580 lbs
- RISER: 1' - 950 lbs
- 2' - 1,800 lbs
- 3' - 2,700 lbs
- 4' - 3,600 lbs
- BASE: 2' - 3,200 lbs
- 3' - 4,400 lbs
- 4' - 4,800 lbs
- 5' - 6,300 lbs
- BASE SLAB: 8" - 1,900 lbs

**CONCRETE:**

Fc = 4,000 psi @ 28 Days

**REINFORCING STEEL:**

- Welded Wire Fabric: ASTM A 497
- Rebar: ASTM A615 Grade 60
- Base w/integral Riser: 0.15 Sq in./lin ft min.
- Base Slab: 0.23 Sq in./lin ft min.

**PIPE PENETRATIONS:**

- Maximum Hole Size: 36"
- Minimum Distance Hole to Hole: 8"
- Holes Cored to Plan Specifications
- Kor-N-Seal Connectors Available
- Standard Knockouts Available



**GRANITE**

**PRECASTING &  
 CONCRETE INC.**