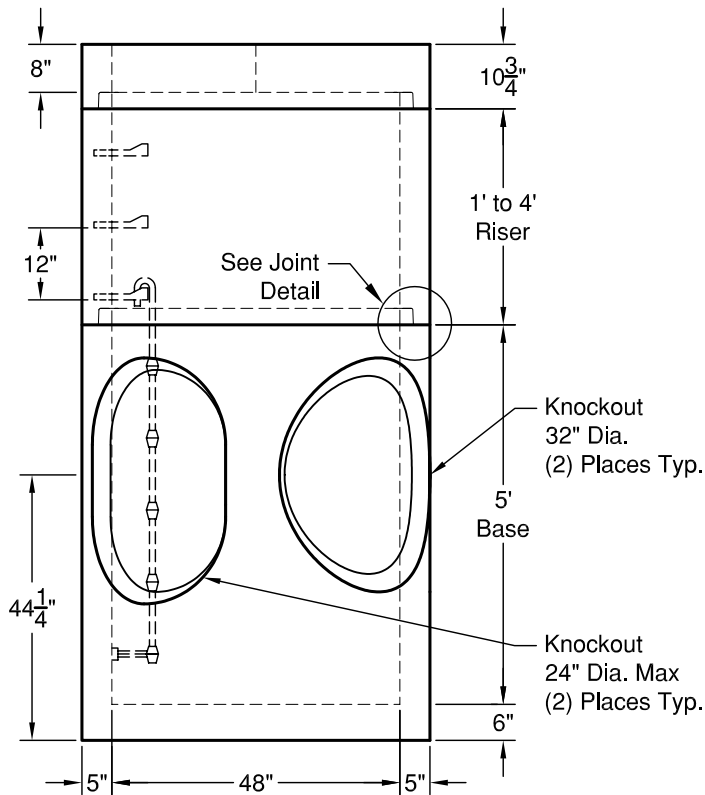
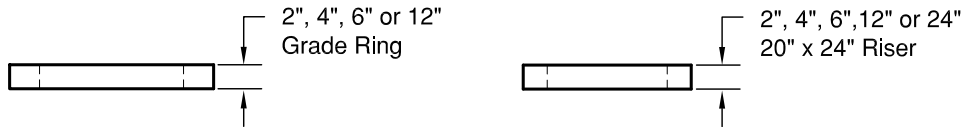
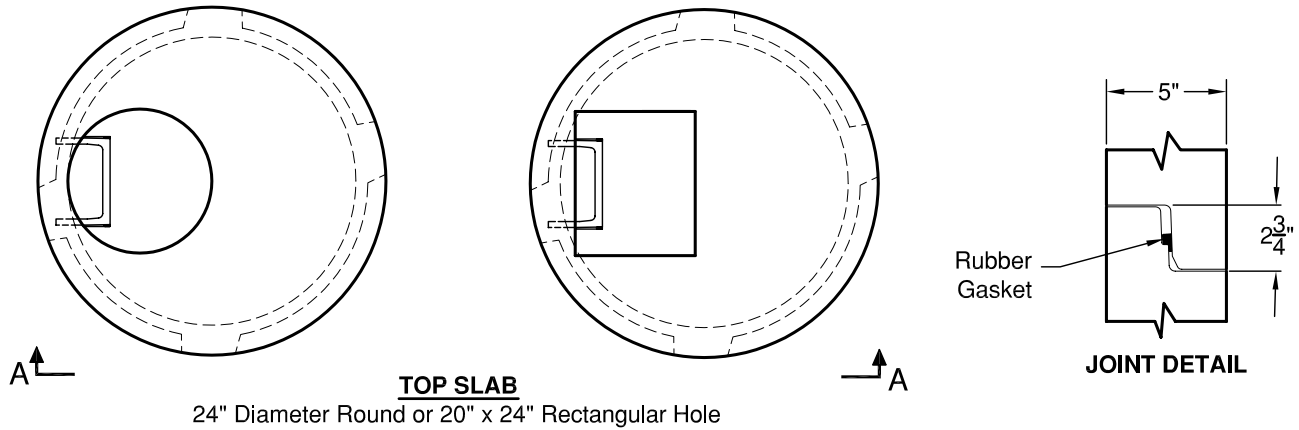


48" Type 2 Catch Basin w/ Knockouts

Meets or Exceeds WSDOT standard plan B-1e
 Catch Basins Constructed in Accordance with ASTM C-478
 Rubber Gasket Conforms to ASTM C-443
 Polypropylene MH Steps Conform to ASTM C-478



ELEVATION AA

WEIGHTS:

TOP SLAB:	1,580 lbs
RISER: 1'	- 950 lbs
2'	- 1,800 lbs
3'	- 2,700 lbs
4'	- 3,600 lbs
BASE 5' KO:	- 5,000 lbs

CONCRETE:

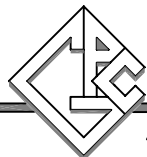
F_c = 4,000 psi @ 28 Days

REINFORCING STEEL:

Welded Wire Fabric: ASTM A497
 Rebar: ASTM A615 Grade 60
 Base w/integral Riser:
 0.15 Sq in./lin ft min.
 Base Slab: 0.23 Sq in./lin ft min.

PIPE PENETRATIONS:

Maximum Hole Size: 36"
 Minimum Distance Hole to Hole: 8"



GRANITE

**PRECASTING &
 CONCRETE INC.**

4116 BAKERVIEW SPUR • BELLINGHAM, WA 98226 • (360) 671-2251 • 1-800-808-2251 • FAX: (360) 671-0780