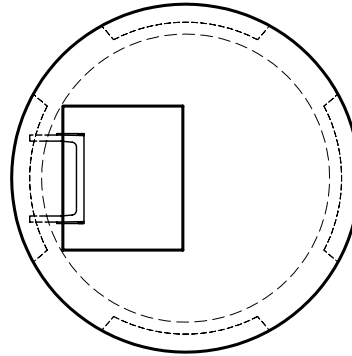
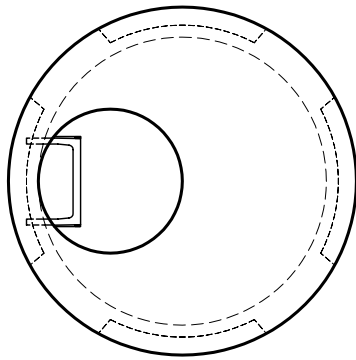


48" Type 2 Catch Basin w/Knockout Base and Riser

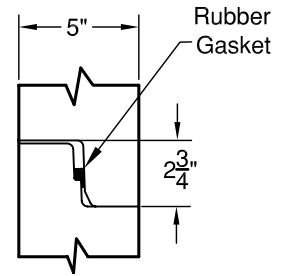
Meets or Exceeds WSDOT standard plan B-1e
 Catch Basins Constructed in Accordance with ASTM C-478
 Rubber Gasket Conforms to ASTM C-443
 Polypropylene MH Steps Conform to ASTM C-478



A ↑

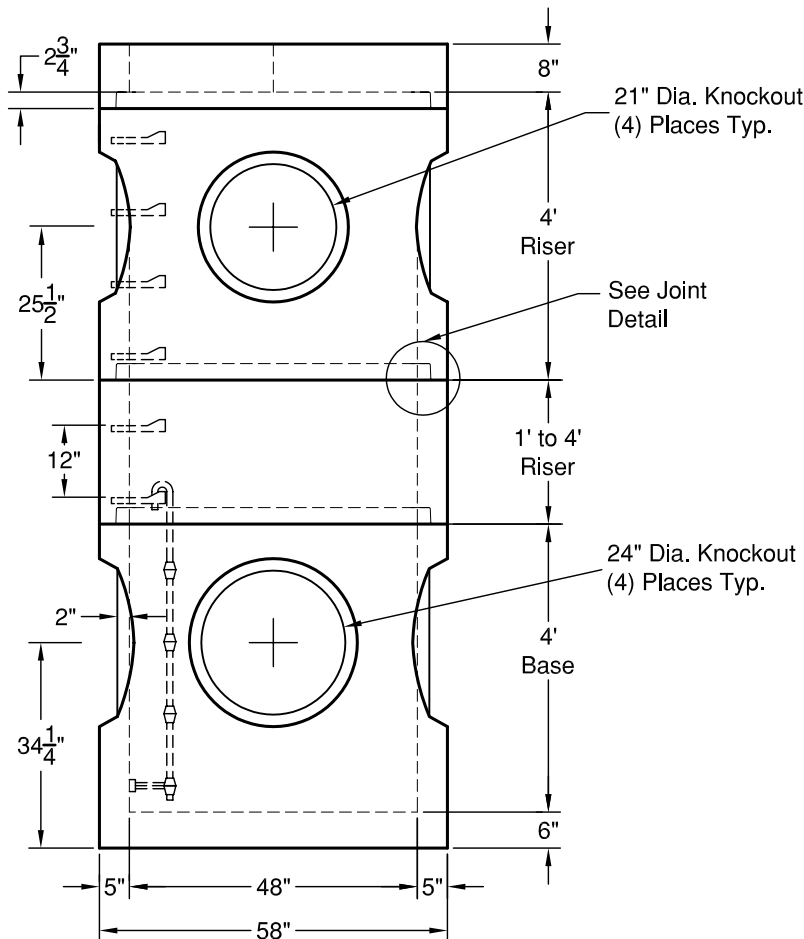
TOP SLAB

24" Diameter Round or 20" x 24" Rectangular Hole

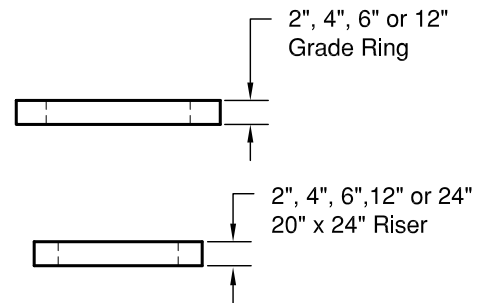


JOINT DETAIL

↑ A



ELEVATION AA



WEIGHTS:

TOP SLAB:	1,580 lbs
RISER: 4' KO	- 3,200 lbs
RISER	1' - 950 lbs
	2' - 1,800 lbs
	3' - 2,700 lbs
	4' - 3,600 lbs
BASE: 4' HKO	- 4,300 lbs

CONCRETE:

Fc= 4,000 psi @ 28 Days

REINFORCING STEEL:

Welded Wire Fabric: ASTM A497
 Rebar: ASTM A615 Grade 60
 Base w/integral Riser:
 0.15 Sq in./lin ft min.
 Base Slab: 0.23 Sq in./lin ft min.

PIPE PENETRATIONS:

Maximum Hole Size: 36"
 Minimum Distance Hole to Hole: 8"



GRANITE

PRECASTING & CONCRETE INC.