

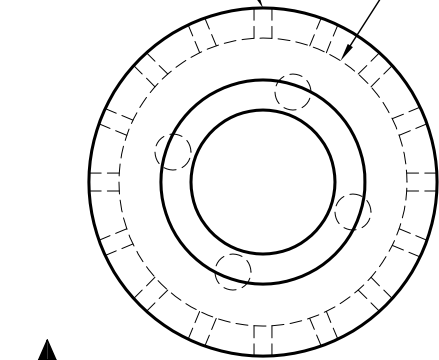
Precast Drywell

Catch Basins Constructed in Accordance with ASTM C-478
 Rubber Gasket Conforms to ASTM C-443
 Meets or exceeds WSDOT Standard Plan B-27

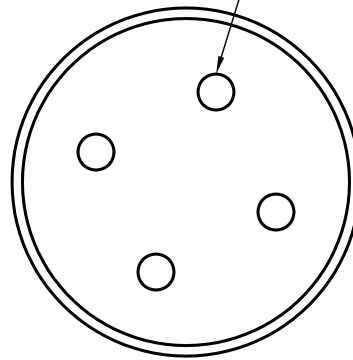
(16) 3" Dia. Seep Holes per Elevation (64) Holes Total

48" Dia. (ID)

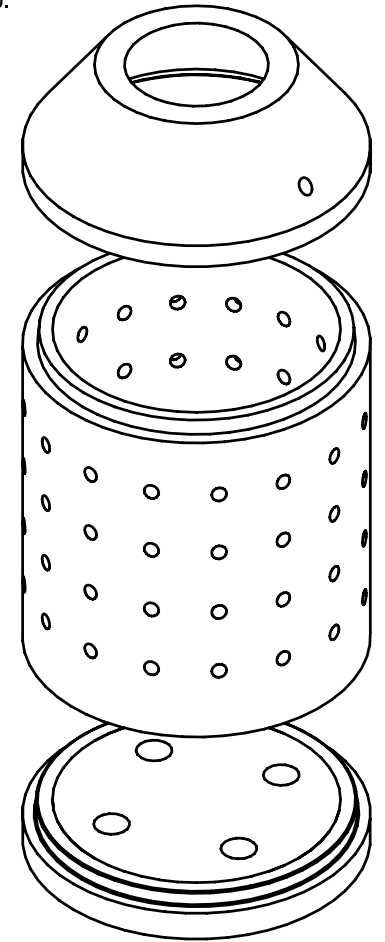
6" Dia. Drain Hole (4) Places Typ.



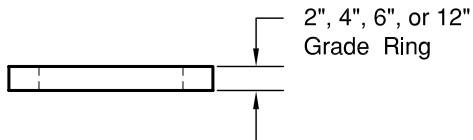
PLAN



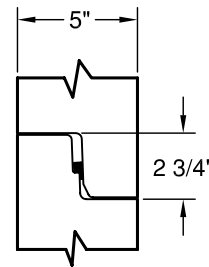
BASE PLAN



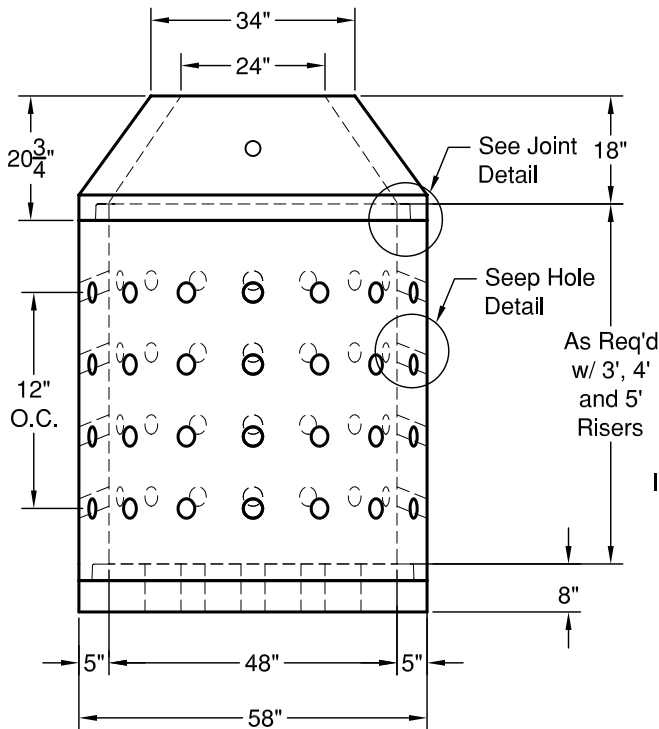
3D VIEW



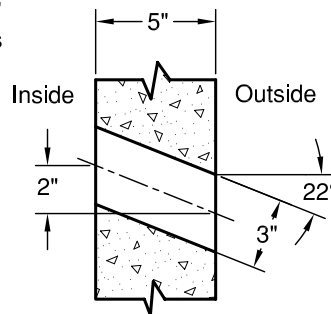
2", 4", 6", or 12" Grade Ring



JOINT DETAIL



ELEVATION AA



SEEP HOLE DETAIL

WEIGHTS:

- CONE: 1.5' - 1,300 lbs
- RISER: 3' - 3,543 lbs
- 4' - 4,256 lbs
- 5' - 5,320 lbs
- BASE SLAB: 8" - 1,900 lbs

CONCRETE:

Fc= 4,000 psi @ 28 Days

REINFORCING STEEL:

- Welded Wire Fabric: ASTM A 497
- Rebar: ASTM A615 Grade 60
- Holes cored as Required



GRANITE

PRECASTING & CONCRETE INC.

4116 BAKERVIEW SPUR • BELLINGHAM, WA 98226 • (360) 671-2251 • 1-800-808-2251 • FAX: (360) 671-0780