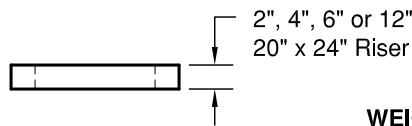
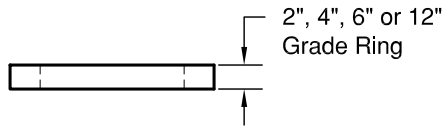
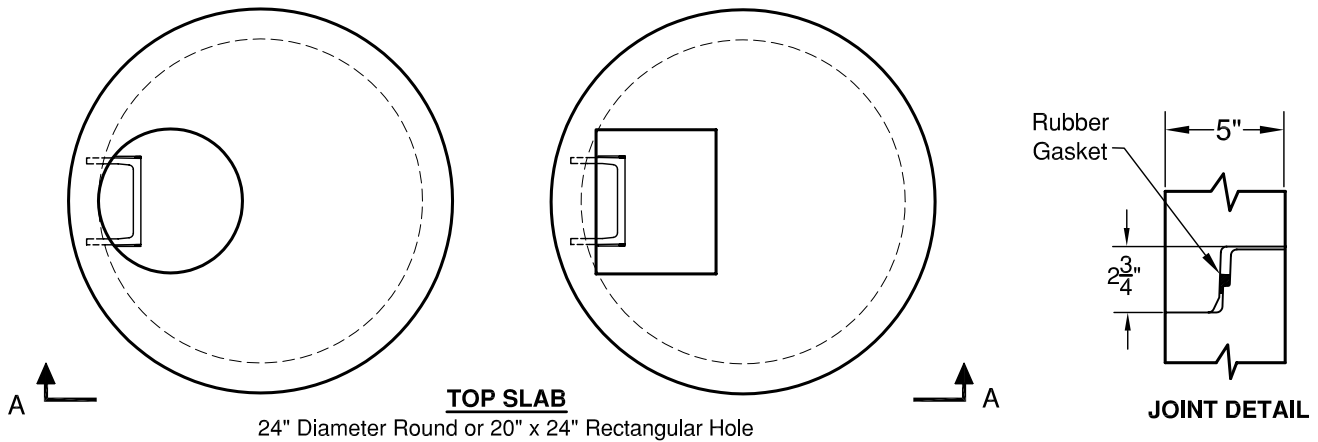


# 54" Type 2 Catch Basin

Meets or Exceeds WSDOT standard plan B-1e  
 Catch Basins Constructed in Accordance with ASTM C-478  
 Rubber Gasket Conforms to ASTM C-443  
 Polypropylene MH Steps Conform to ASTM C-478



### WEIGHTS:

TOP SLAB:	1,940 lbs
RISER:	1' - 960 lbs
	2' - 1,900 lbs
	3' - 2,900 lbs
	4' - 3,800 lbs
	5' - 4,700 lbs
	6' - 5,800 lbs
BASE:	2' - 3,500 lbs
	3' - 4,400 lbs
	4' - 5,300 lbs
BASE SLAB:	2,000 lbs

### CONCRETE:

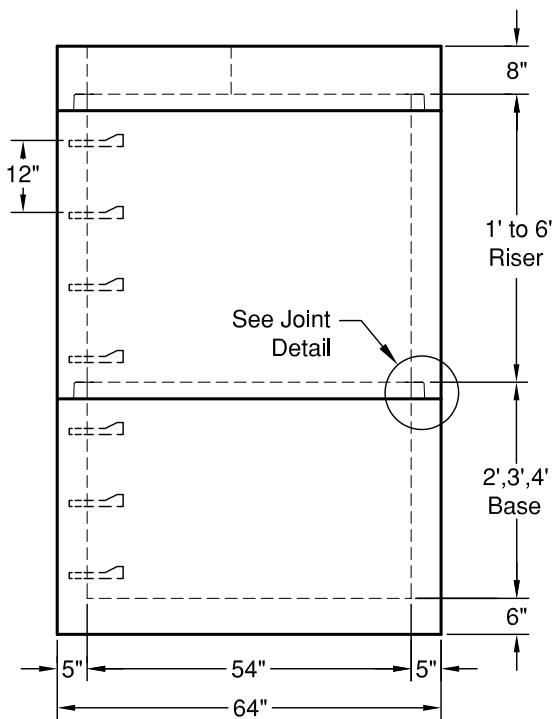
F<sub>c</sub> = 4,000 psi @ 28 Days

### REINFORCING STEEL:

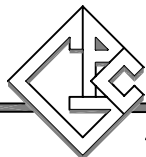
Welded Wire Fabric: ASTM A 497  
 Rebar: ASTM A615 Grade 60  
 Riser: 0.15 Sq in./lin ft min.  
 Base: 0.19 Sq in./lin ft min.

### PIPE PENETRATIONS:

Maximum Hole Size: 42"  
 Minimum Distance Hole to Hole: 8"  
 Holes Cored to Plan Specifications  
 Kor-N-Seal Connectors Available  
 Standard Knockouts Available



**ELEVATION AA**



# GRANITE

# PRECASTING & CONCRETE INC.