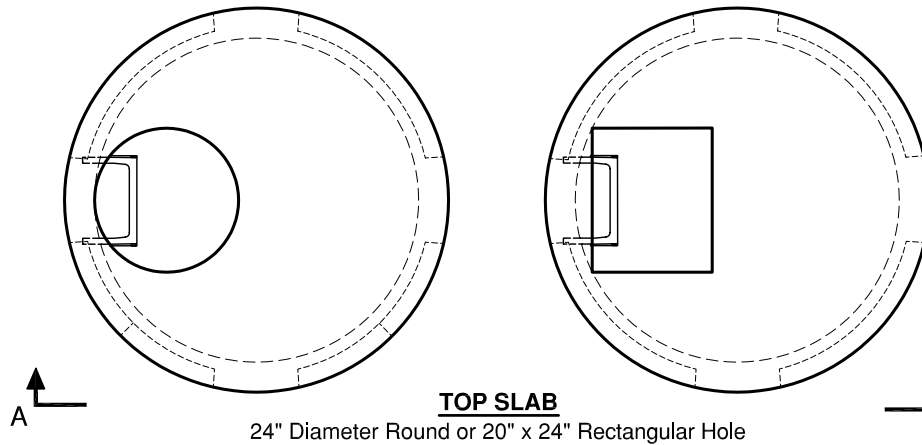
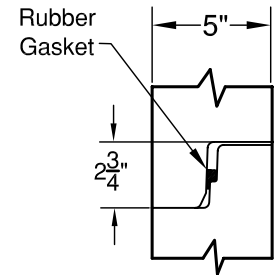


54" Type 2 Catch Basin w/ Knockouts

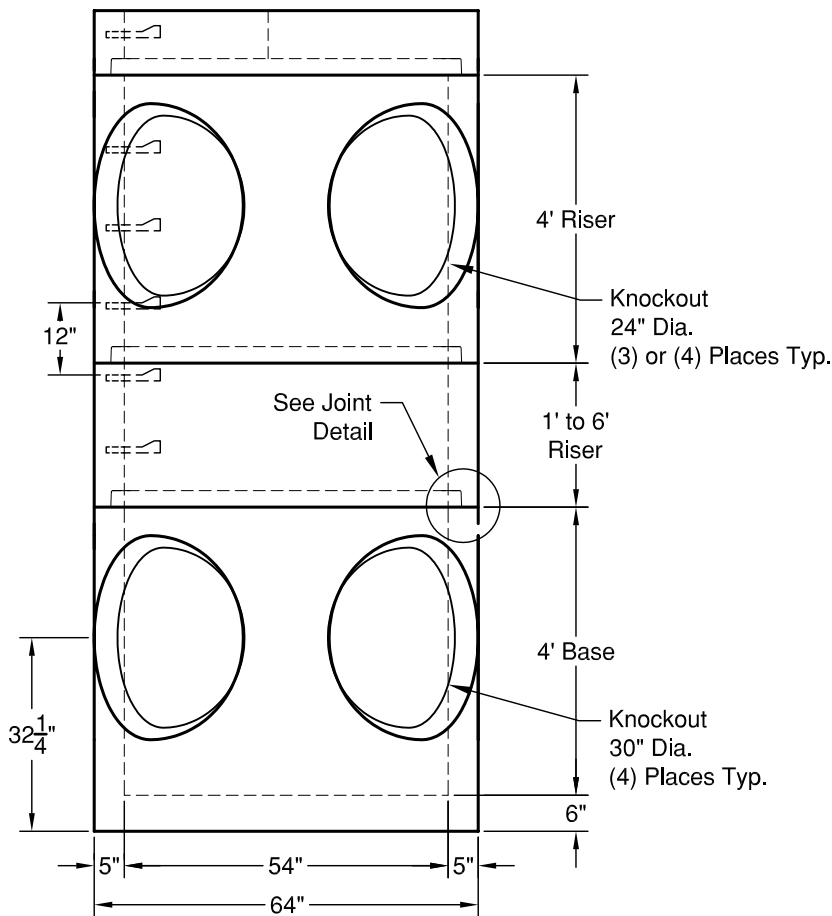
Meets or Exceeds WSDOT standard plan B-1e
Catch Basins Constructed in Accordance with ASTM C-478
Rubber Gasket Conforms to ASTM C-443
Polypropylene MH Steps Conform to ASTM C-478



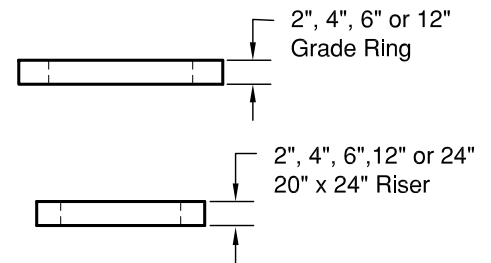
TOP SLAB
24" Diameter Round or 20" x 24" Rectangular Hole



JOINT DETAIL



ELEVATION AA



WEIGHTS:

- TOP SLAB: 1,940 lbs
- RISER: 4' KO - 2,700 lbs
- RISER: 1' - 960 lbs
- 2' - 1,900 lbs
- 3' - 2,900 lbs
- 4' - 3,800 lbs
- 5' - 4,700 lbs
- 6' - 5,800 lbs
- BASE: 4' HKO - 4,680 lbs

CONCRETE:

F_c = 4,000 psi @ 28 Days

REINFORCING STEEL:

Welded Wire Fabric: ASTM A 497
Rebar: ASTM A615 Grade 60
Riser: 0.15 Sq in./lin ft min.
Base: 0.19 Sq in./lin ft min.

PIPE PENETRATIONS:

Maximum Hole Size: 42"
Minimum Distance Hole to Hole: 8"



GRANITE

**PRECASTING &
CONCRETE INC.**

4116 BAKERVIEW SPUR • BELLINGHAM, WA 98226 • (360) 671-2251 • 1-800-808-2251 • FAX: (360) 671-0780