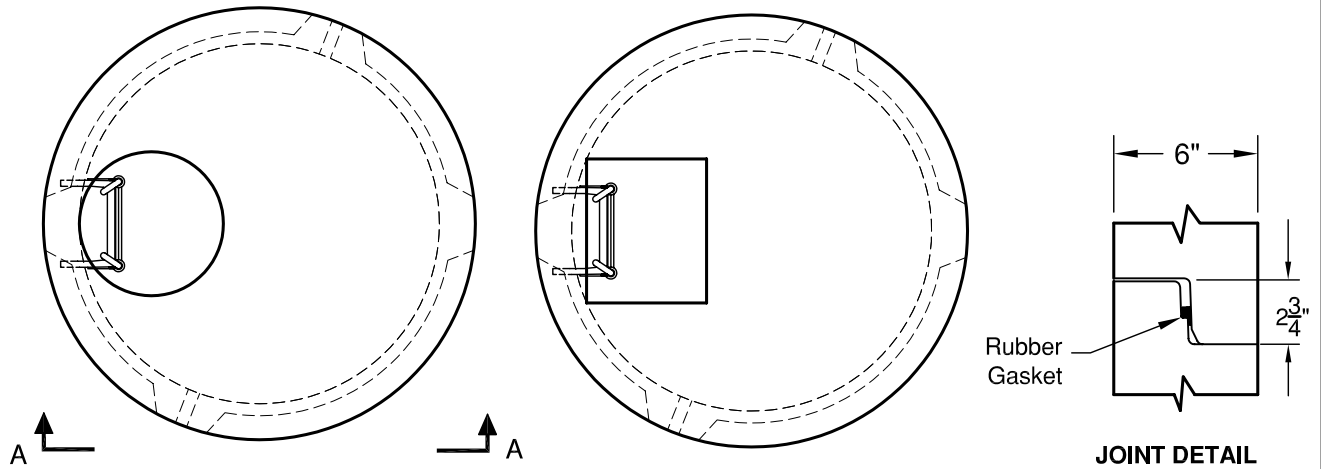


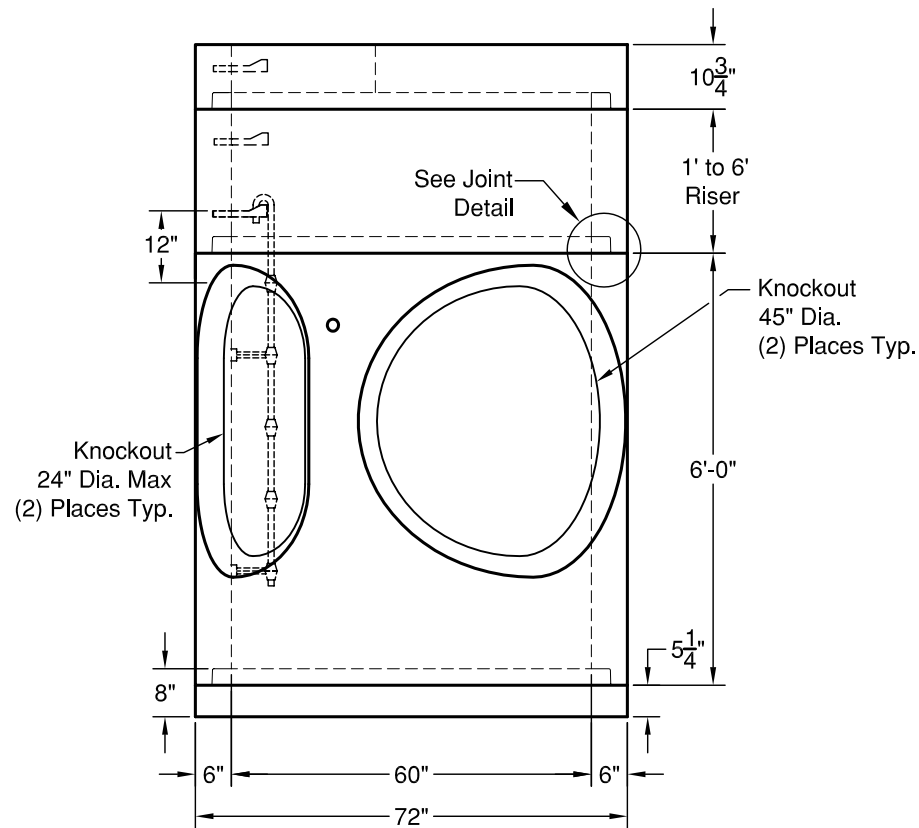
60" Type 2 Catch Basin w/ Knockouts

Meets or Exceeds WSDOT standard plan B-1e
 Catch Basins Constructed in Accordance with ASTM C-478
 Rubber Gasket Conforms to ASTM C-443
 Polypropylene MH Steps Conform to ASTM C-478

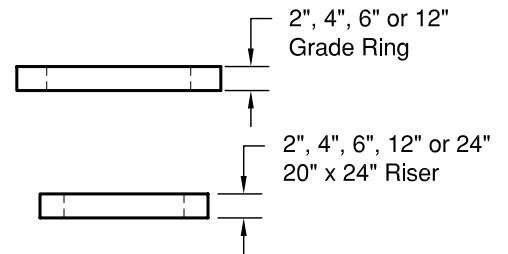


TOP SLAB

24" Diameter Round or 20" x 24" Rectangular Hole



ELEVATION AA



WEIGHTS:

TOP SLAB:	2,620 lbs
RISER:	1' - 1,300 lbs
	2' - 2,600 lbs
	3' - 3,900 lbs
	4' - 5,200 lbs
	5' - 6,500 lbs
	6' - 7,800 lbs
RISER: 5' HKO	- 4,480 lbs
6' HKO	- 5,700 lbs
BASE SLAB:	2,980 lbs

CONCRETE:

$F_c = 4,000$ psi @ 28 Days

REINFORCING STEEL:

Welded Wire Fabric: ASTM A 497
 Rebar: ASTM A615 Grade 60
 Riser: 0.15 Sq in./lin ft min.
 Base Slab: 0.25 Sq in./lin ft min.

PIPE PENETRATIONS:

Maximum Hole Size: 48"
 Minimum Distance Hole to Hole: 8"
 Holes Cored to Plan Specifications
 Kor-N-Seal Connectors Available



GRANITE

PRECASTING & CONCRETE INC.

4116 BAKERVIEW SPUR • BELLINGHAM, WA 98226 • (360) 671-2251 • 1-800-808-2251 • FAX: (360) 671-0780