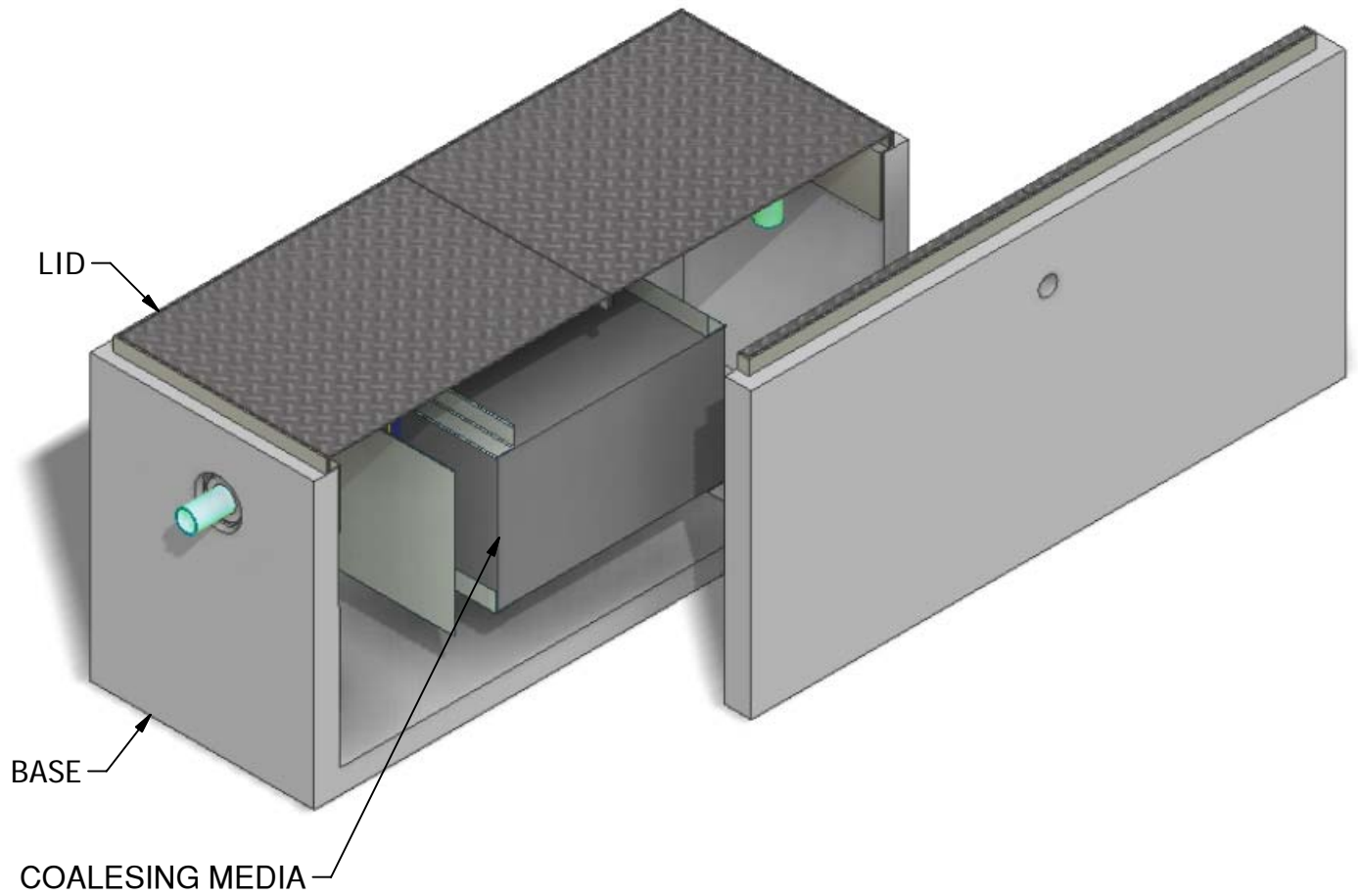


# 2 x 5 Coalescing Separator 1

Projected Plate Area: 120 Sq/ft  
Max. Process Flow Rate: 113 GPM



INTERIOR DIMENSIONS:  
1'-11"W x 4'-9"L x 2'-3 1/2"H

WEIGHTS:  
LID (200 lbs)  
BASE (1,532 lbs)

NOTE: Side panel has been shifted to show internal view and is not removable.

© 2011 Granite Precasting & Concrete, Inc.



## GRANITE™

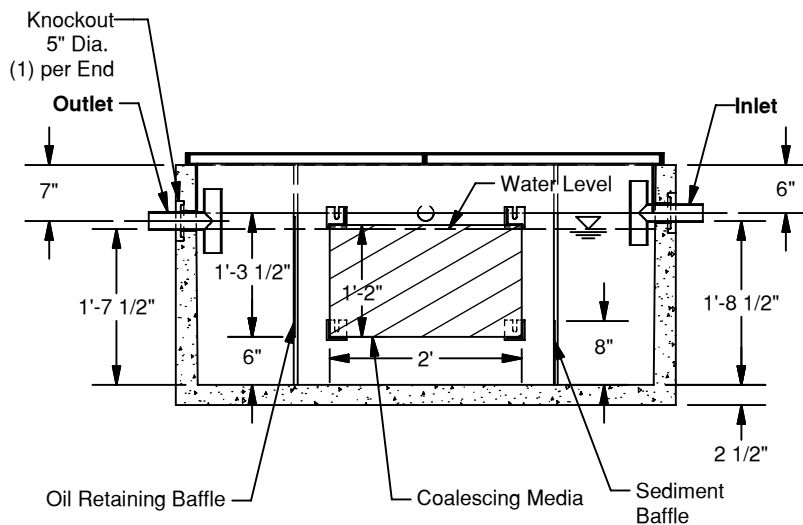
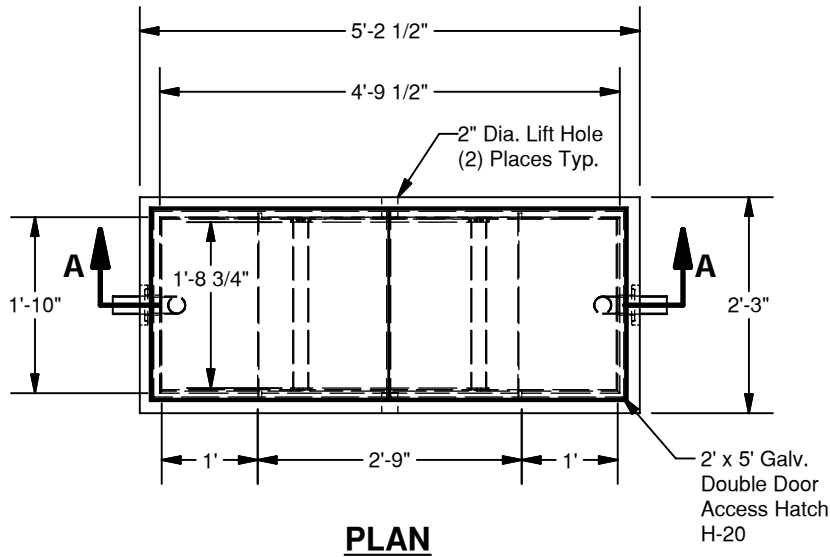
## PRECASTING & CONCRETE INC.

4116 BAKERVIEW SPUR • BELLINGHAM, WA. 98226 • (360) 671-2251 • 1-800-808-2251 • FAX: (360) 671-0780

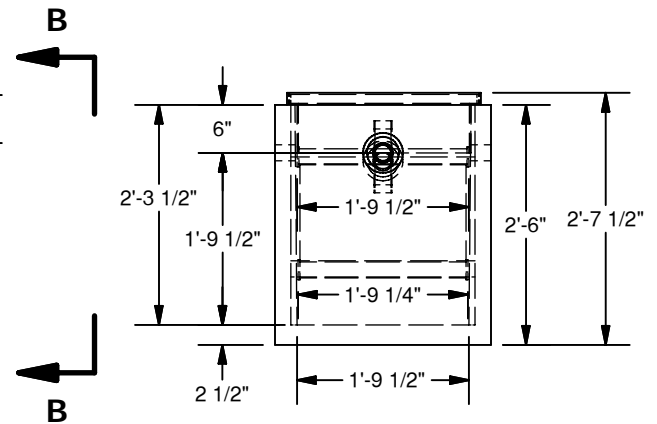
# 2 x 5 Coalescing Separator 1

Projected Plate Area: 120 Sq/ft  
Max. Process Flow Rate: 113 GPM

**BASIC DESIGN INFORMATION**  
Design Flow = 30 GPM  
Influent Oil Concentration = 100 ppm  
Operating Temperature = 50 deg. F  
Sized to Remove 60 micron and larger  
Oil Specific Gravity = 0.88  
Oil Rise Rate = 0.033 ft/min  
Effluent Quality = 10 PPM  
Designed per WA State Dept. of Ecology  
"Volume V Runoff Treatment BMPs",  
Chapter 11, August 2001



**SECTION A-A**



© 2011 Granite Precasting & Concrete, Inc.

**SPECIFICATIONS**

- Concrete: Fc=5,000 psi @ 28 days
- Rebar: ASTM A-615 Grade 60
- Design: ASTM C-857 "Minimum Structural Design Loading for Underground Precast Concrete Utility Structures"
- Loads: AASHTO HS-20
- Backfill with granular free draining material (sand or pea gravel) free of stones or cobbles greater than 4" dia.
- All pipe to be supplied and installed by contractor.
- Contractor to field install baffle.
- Fill with clean water prior to start up.
- Items shown are subject to change without notice.