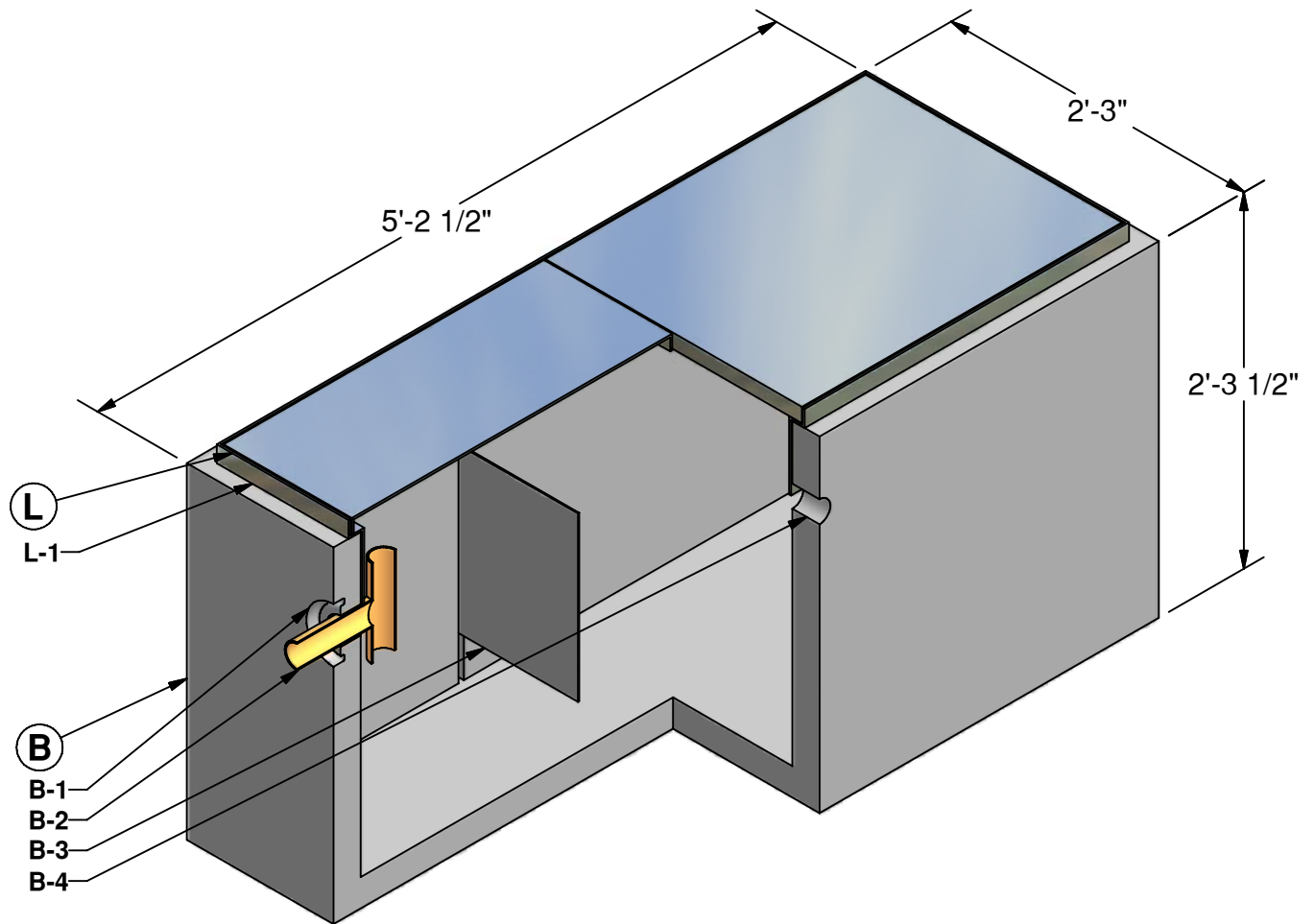


2 x 5 Grease Interceptor

100 Gallon
Capacity



Ⓛ LID (200 lbs)

L-1. 2 x 5 GALV. DOUBLE DOOR HATCH

Ⓑ BASE (1,532 lbs)

B-1. 5" DIA. KNOCKOUT
B-2. OUTLET PIPE AND TEE (BY OTHERS)
B-3. STAINLESS STEEL BAFFLE
B-4. 2" DIA. LIFTING HOLE

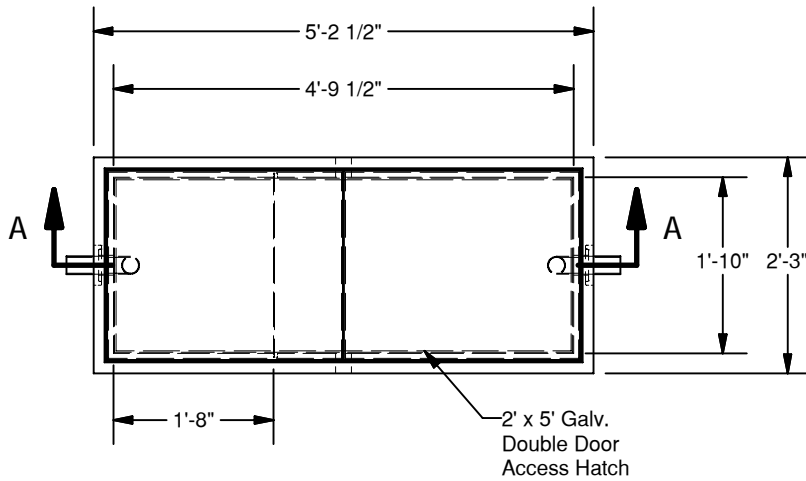


GRANITE™ PRECASTING & CONCRETE INC.

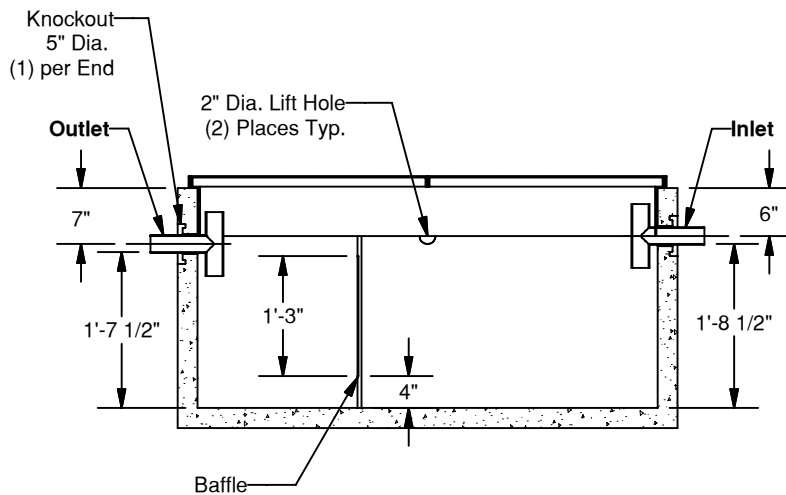
4116 BAKERVIEW SPUR • BELLINGHAM, WA. 98226 • (360) 671-2251 • 1-800-808-2251 • FAX: (360) 671-0780

2 x 5 Grease Interceptor

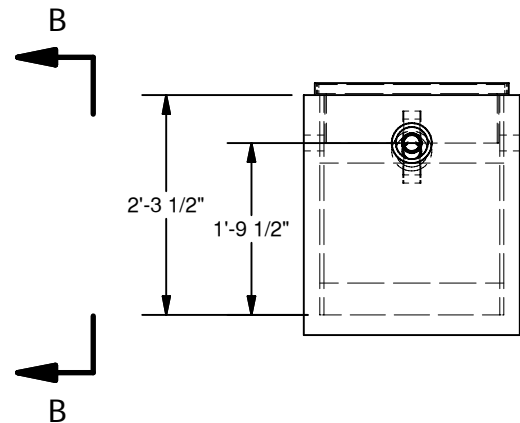
100 Gallon
Capacity



PLAN



SECTION A-A



VIEW B-B

SPECIFICATIONS

- Concrete: $F_c=5,000$ psi @ 28 days
- Rebar: ASTM A-615 Grade 60
- Design: ASTM C-857 "Minimum Structural Design Loading for Underground Precast Concrete Utility Structures"
- Loads: AASHTO HS-20
- Backfill with granular free draining material (sand or pea gravel) free of stones or cobbles greater than 4" dia.
- All pipe to be supplied and installed by contractor.
- Contractor to field install baffle.
- Fill with clean water prior to start up.
- Items shown are subject to change without notice.