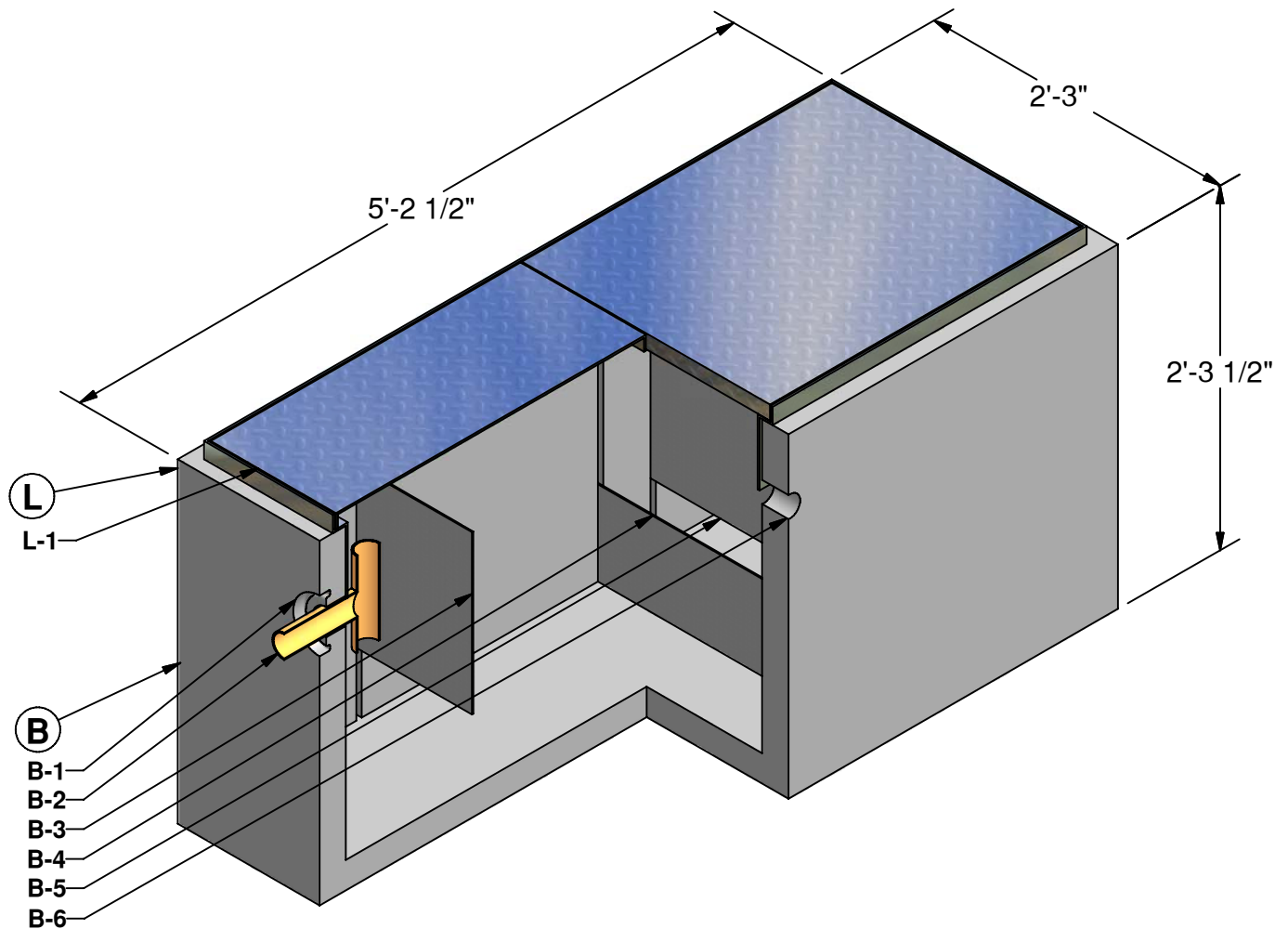


# 2 x 5 Oil Water Separator

100 Gallon  
Capacity



**L** LID (200 lbs)

L-1. 2 x 5 GALV. DOUBLE DOOR HATCH

**B** BASE (1,532 lbs)

B-1. 5" DIA. KNOCKOUT  
B-2. OUTLET PIPE AND TEE (BY OTHERS)  
B-3. OIL RETAINING BAFFLE  
B-4. SLUDGE RETAINING BAFFLE  
B-5. FLOW DIFFUSER BAFFLE  
B-6. 2" DIA. LIFTING HOLE



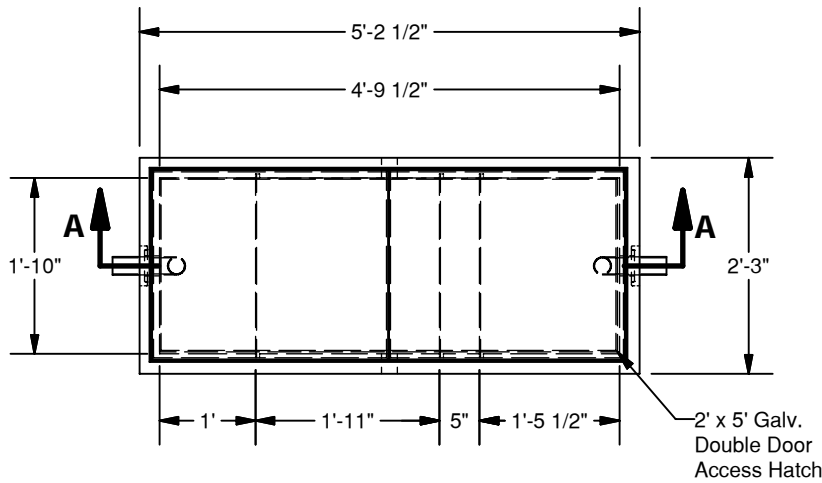
## GRANITE™

## PRECASTING & CONCRETE INC.

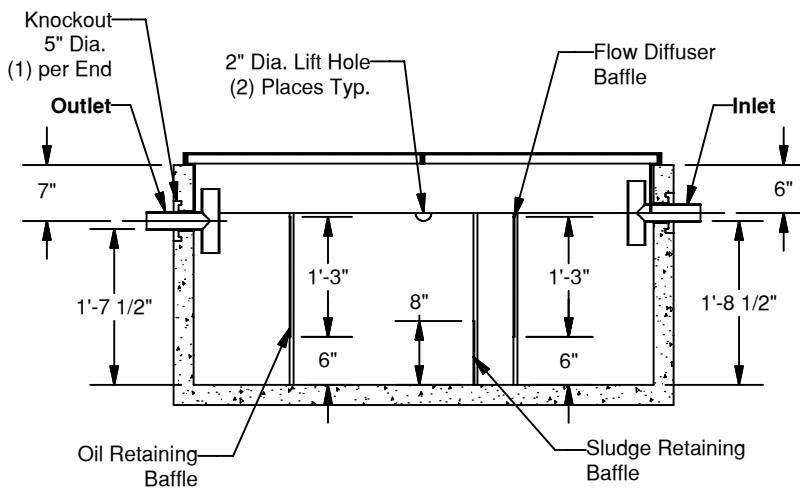
4116 BAKERVIEW SPUR • BELLINGHAM, WA. 98226 • (360) 671-2251 • 1-800-808-2251 • FAX: (360) 671-0780

# 2 x 5 Oil Water Separator

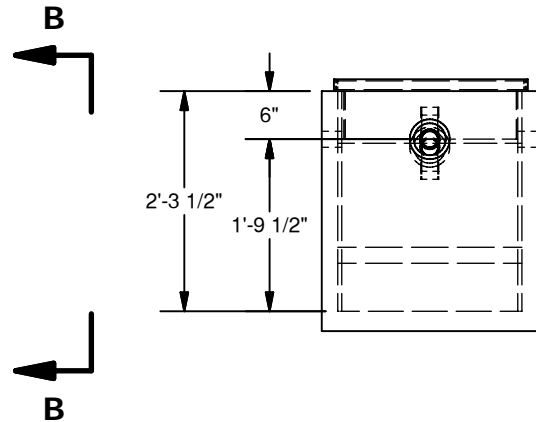
100 Gallon  
Capacity



PLAN



SECTION A-A



VIEW B-B

## SPECIFICATIONS

- Concrete:  $F_c=5,000$  psi @ 28 days
- Rebar: ASTM A-615 Grade 60
- Design: ASTM C-857 "Minimum Structural Design Loading for Underground Precast Concrete Utility Structures"
- Loads: AASHTO HS-20
- Backfill with granular free draining material (sand or pea gravel) free of stones or cobbles greater than 4" dia.
- All pipe to be supplied and installed by contractor.
- Contractor to field install baffle.
- Fill with clean water prior to start up.
- Items shown are subject to change without notice.