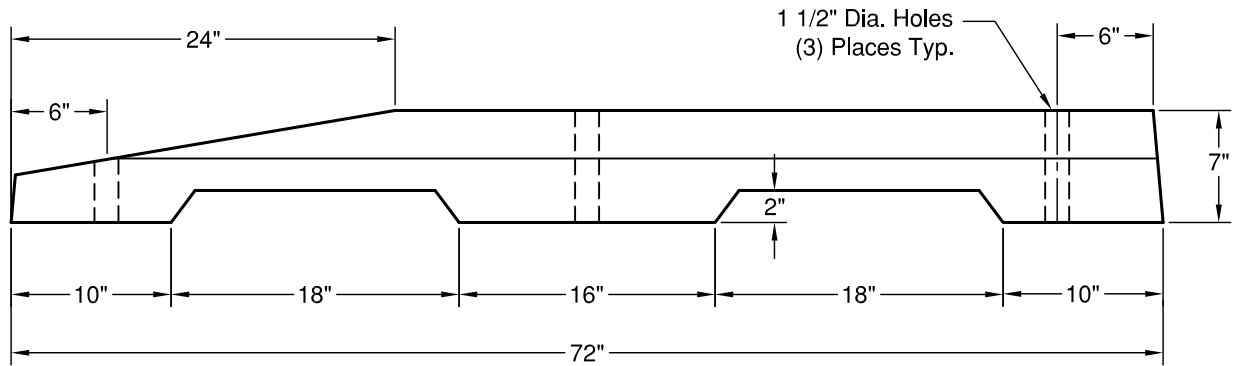
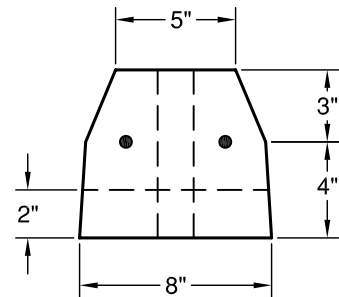
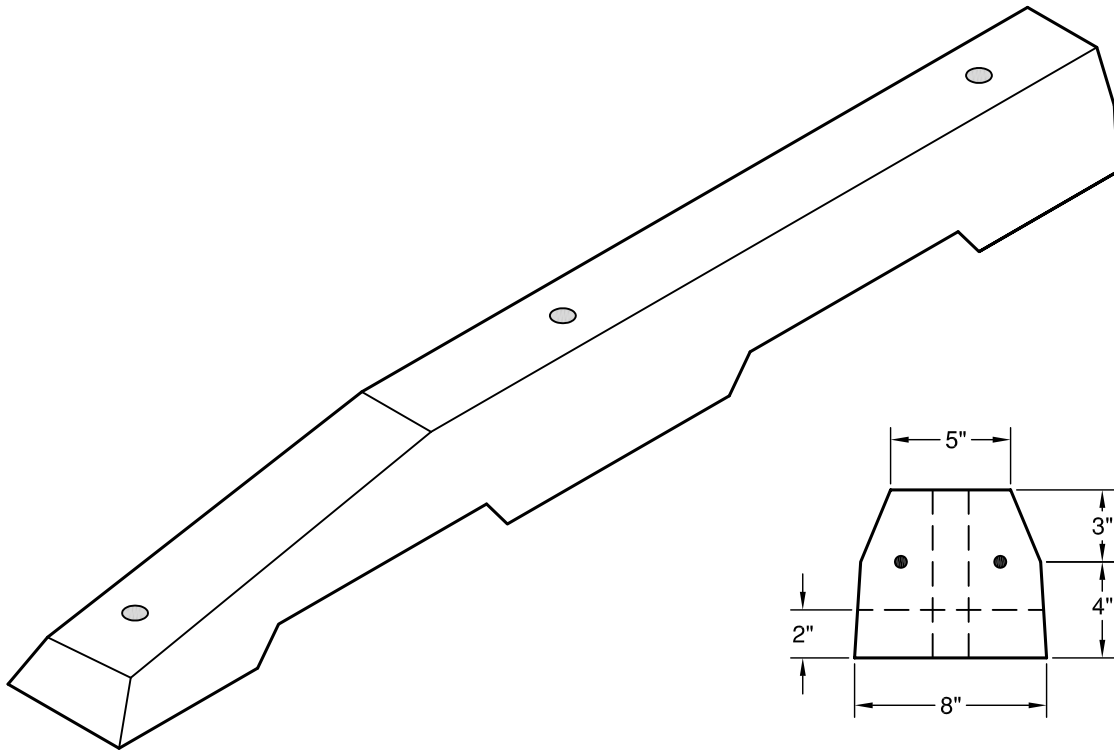


# Type 'K' Tapered End



**ELEVATION**



**SECTION**

Precast End Curb Male or Female  
Key as Specified by Installer.

Weight: 200 lbs  
Concrete:  $F_c = 4,000$  psi @ 28 Days  
Reinforcement: (2) - #4 Rebar  
ASTM A-615 Grade 60

328



**GRANITE**

**PRECASTING &  
CONCRETE INC.**

4116 BAKERVIEW SPUR • BELLINGHAM, WA 98226 • (360) 671-2251 • 1-800-808-2251 • FAX: (360) 671-0780