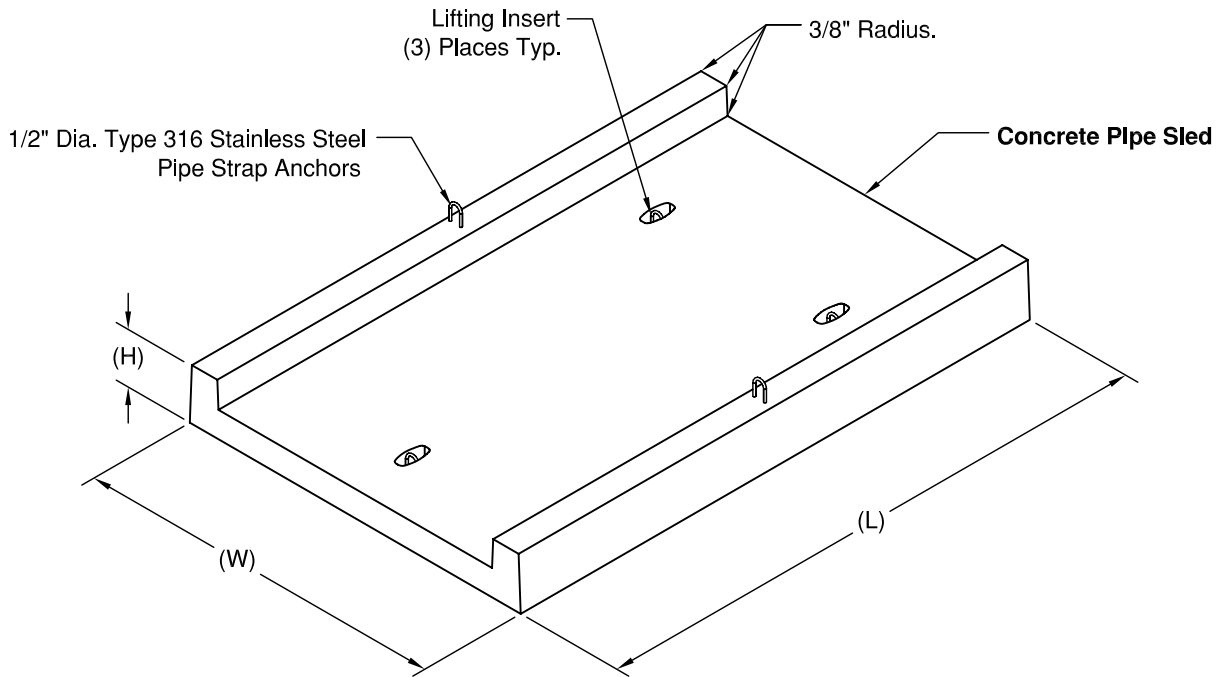
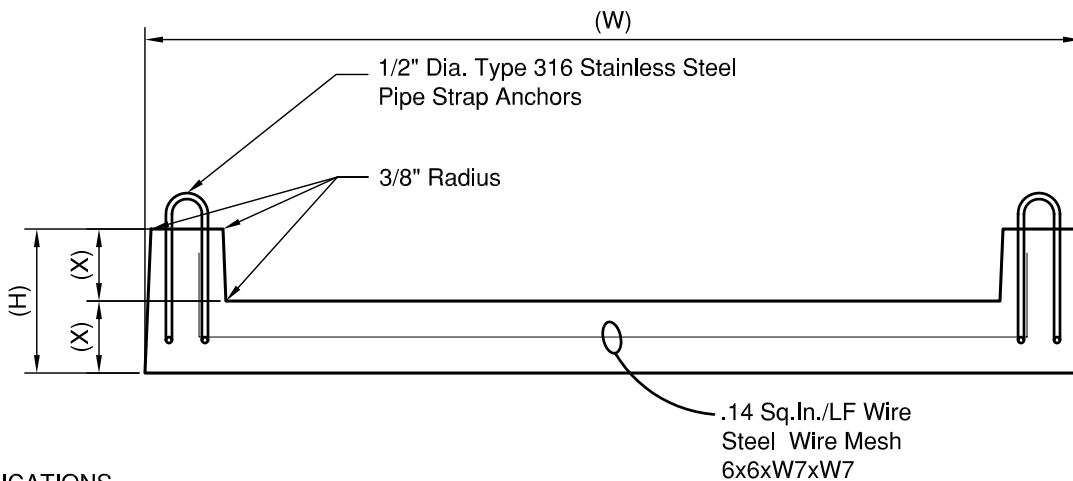


Concrete Pipe Sled



3D-ISO VIEW



END VIEW

SPECIFICATIONS

Concrete: $F_c=5000$ psi @28 days
 Rebar: ASTM A-615 Grade 60
 Design: ASTM C-857 "Minimum Structural Design Loading
 for Underground Precast Concrete Utility Structures"
 Loads: AASHTO HS-20



GRANITE

**PRECASTING &
CONCRETE INC.**