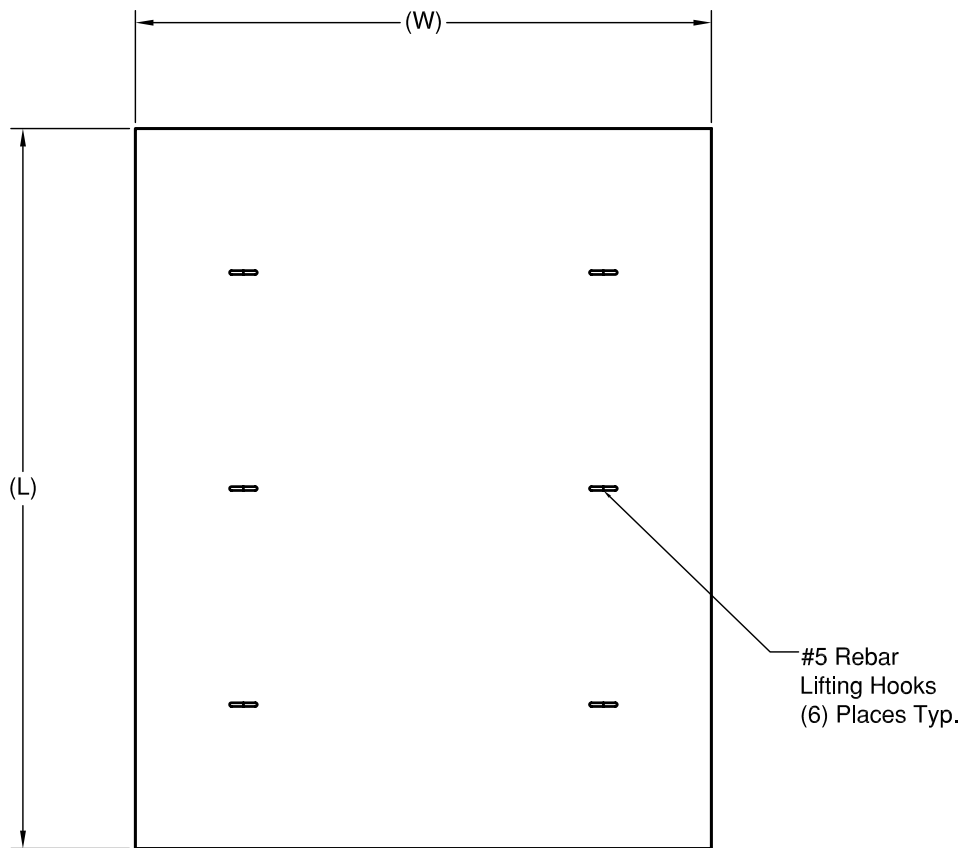
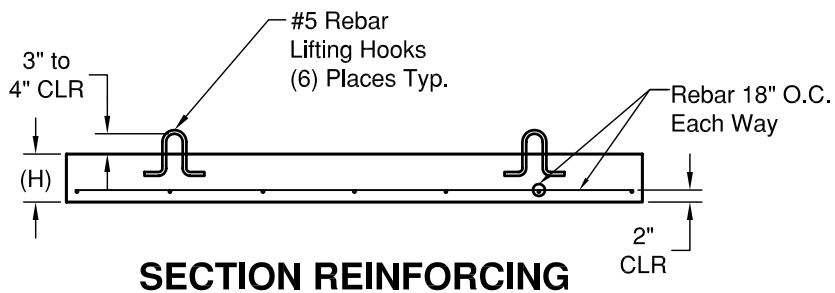


Pipe Cradle Slab



PLAN



SECTION REINFORCING

SPECIFICATIONS

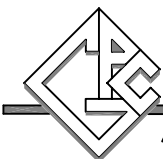
Concrete: $F_c=5000$ psi @28 days

Rebar: ASTM A-615 Grade 60

Design: ASTM C-857 "Minimum Structural Design Loading for Underground Precast Concrete Utility Structures"

Loads: AASHTO HS-20

341



GRANITE

PRECASTING & CONCRETE INC.

4116 BAKERVIEW SPUR • BELLINGHAM, WA 98226 • (360) 671-2251 • 1-800-808-2251 • FAX: (360) 671-0780