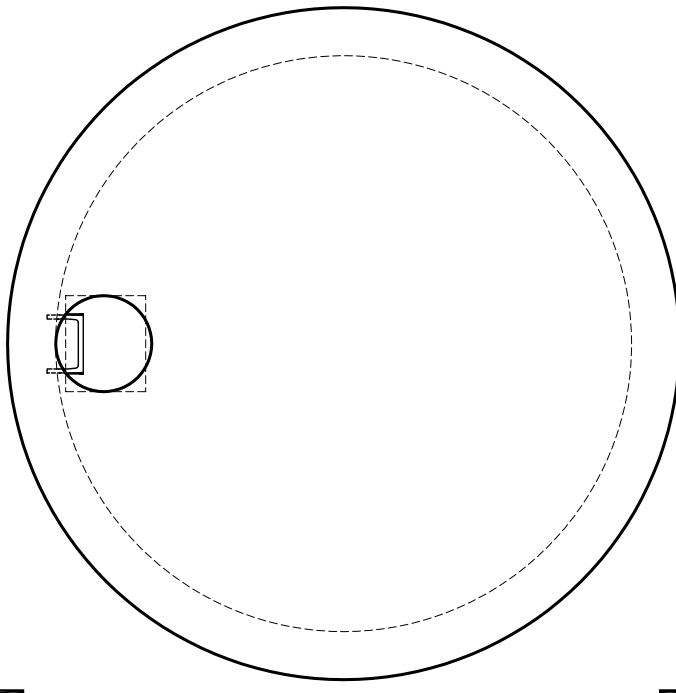


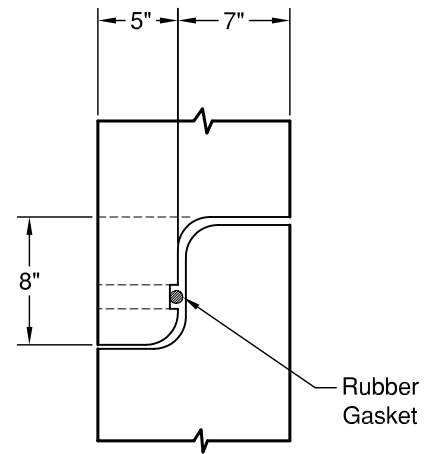
144" Type 2 Catch Basin

Meets or Exceeds WSDOT Standard Plan B-1e
 Manholes Constructed in Accordance With ASTM C-478
 Rubber Gasket Conforms to ASTM C-443
 Polypropylene MH Steps Conform to ASTM C-478

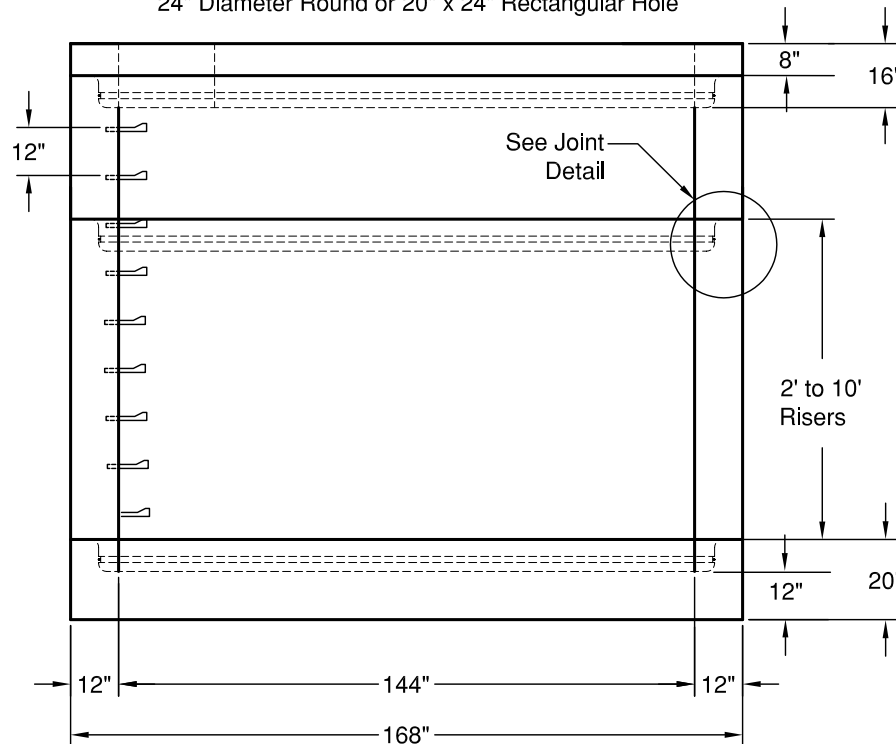
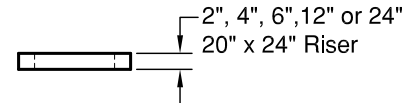
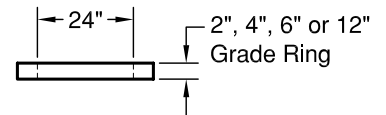


TOP SLAB

24" Diameter Round or 20" x 24" Rectangular Hole



JOINT DETAIL



SECTION AA

WEIGHTS:

- TOP SLAB: 30,000 lbs
- RISER: 6,200 lbs/ft
- BASE SLAB: 25,300 lbs

CONCRETE:

Fc= 4,000 psi @ 28 Days

REINFORCING STEEL:

- Welded Wire Fabric: ASTM A185
- Rebar: ASTM A615 Grade 60
- Riser: 0.36 Sq in./lin ft min.
- Base Slab: 0.72 Sq in./ft e.w.min.

PIPE PENETRATIONS:

Holes Cored to Plan Specifications
 Kor-N-Seal Connections Available



GRANITE

**PRECASTING &
 CONCRETE INC.**