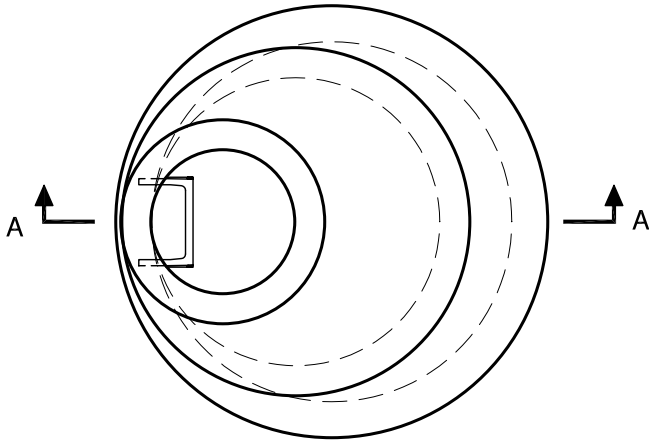
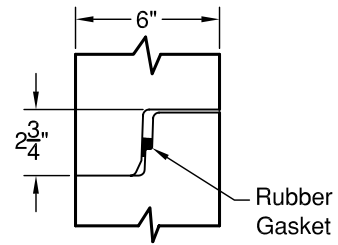


Top Slab Reducer

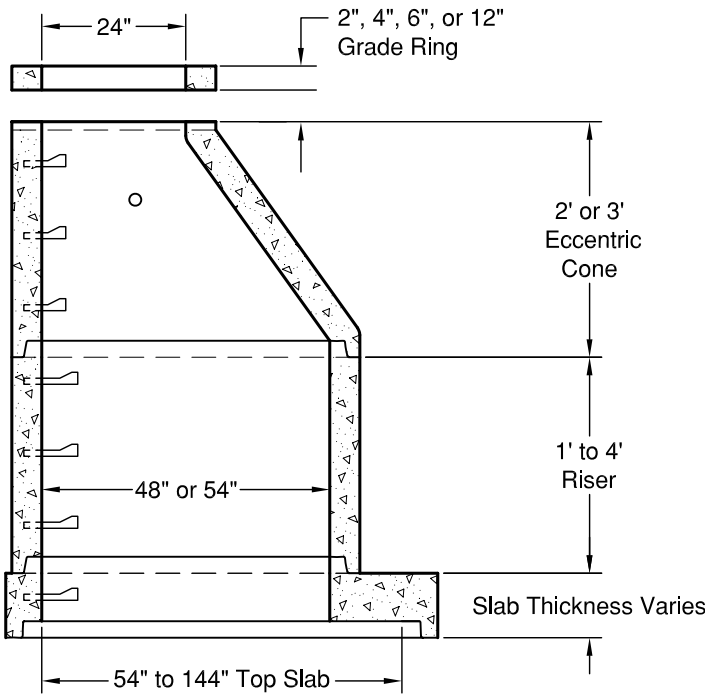
Meets or Exceeds WSDOT Std Plan B-15.40-00
 Manholes Constructed in Accordance with ASTM C-478
 Rubber Gasket Conforms to ASTM C-443
 Polypropylene MH Steps Conform to ASTM C-478



PLAN VIEW



JOINT DETAIL



SECTION AA

WEIGHTS:

CONE:	2' - 1,740 lbs
	3' - 2,540 lbs
RISER:	1' - 950 lbs
	2' - 1,800 lbs
	3' - 2,700 lbs
	4' - 3,600 lbs
TOP SLAB:	54" - 997 lbs
	60" - 1,677 lbs
	72" - 2,677 lbs
	84" - 7,286 lbs
	96" - 8,646 lbs
	120" - 16,186 lbs
	144" - 28,116 lbs

CONCRETE:

Fc= 4,000 psi @ 28 Days

REINFORCING STEEL:

Rebar: ASTM A615 Grade 60
 Welded Wire Fabric: ASTM A497

© 2011 Granite Precasting & Concrete, Inc.



GRANITE™

**PRECASTING &
 CONCRETE INC.**

4116 BAKERVIEW SPUR • BELLINGHAM, WA 98226 • (360) 671-2251 • 1-800-808-2251 • FAX: (360) 671-0780