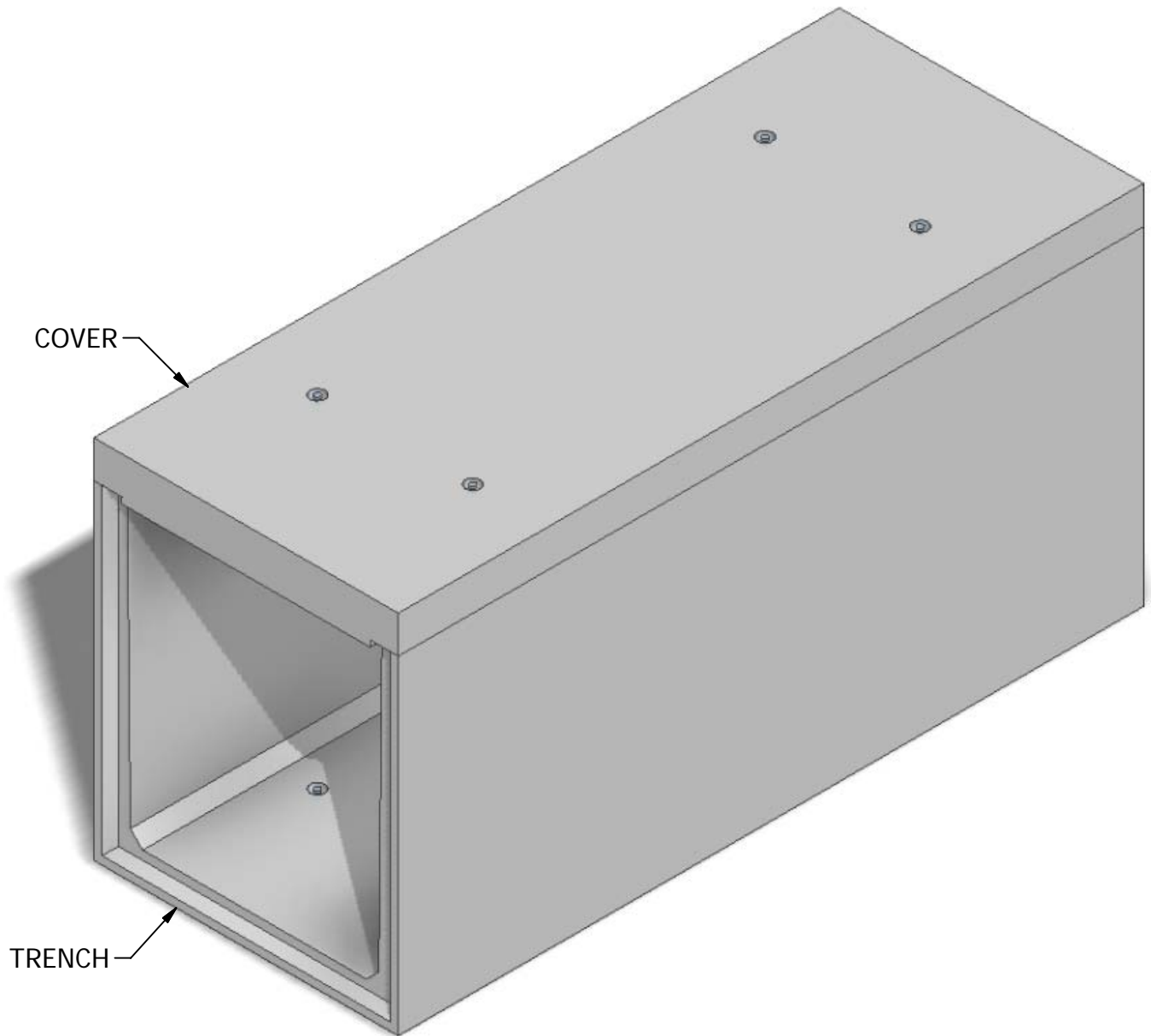


# 40 x 48 Precast Trench



INTERIOR DIMENSIONS:  
4'-0"H x 3'-4"W

WEIGHTS:  
COVER (3,478 lbs)  
TRENCH (6,800 lbs)

© 2011 Granite Precasting & Concrete, Inc.

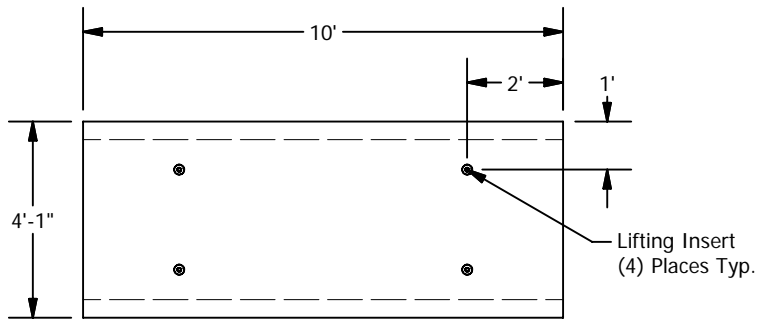


**GRANITE**<sup>TM</sup>

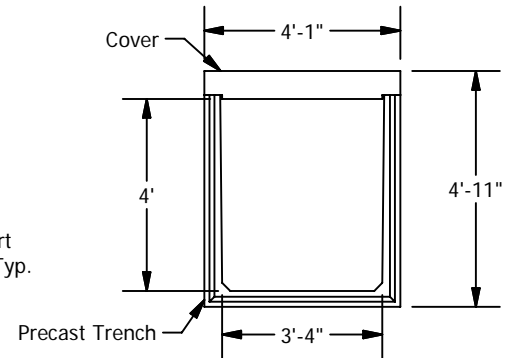
**PRECASTING &  
CONCRETE INC.**

4116 BAKERVIEW SPUR • BELLINGHAM, WA. 98226 • (360) 671-2251 • 1-800-808-2251 • FAX: (360) 671-0780

# 40 x 48 Precast Trench



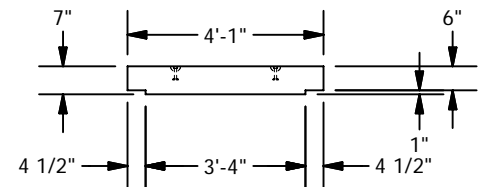
PLAN (COVER)



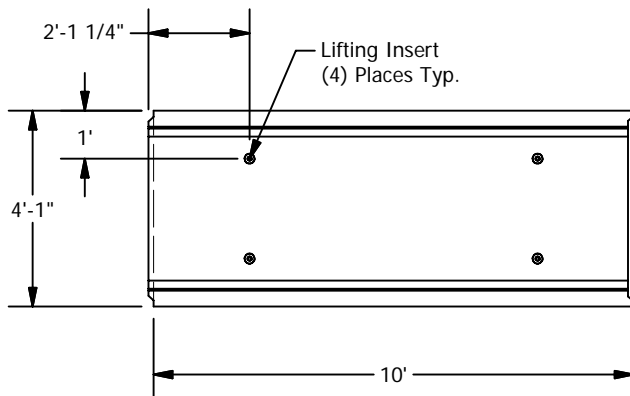
ASSEMBLED SECTION



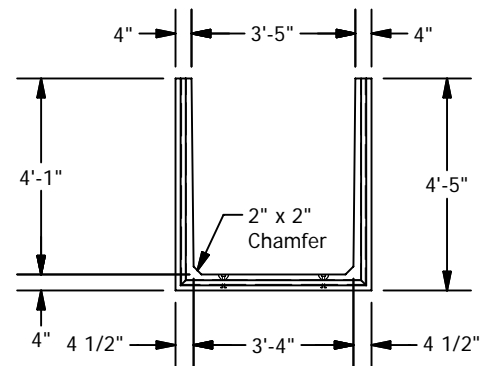
ELEVATION (COVER)



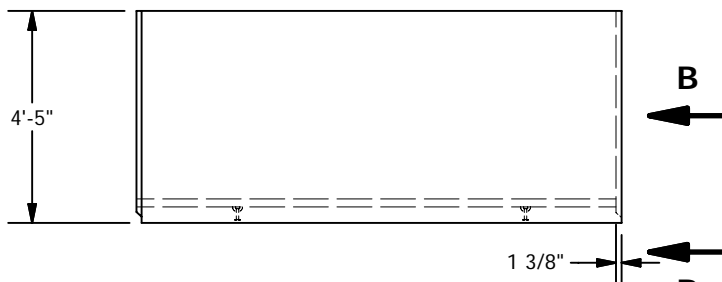
VIEW A-A  
SCALE 1/48



PLAN



VIEW B-B  
SCALE 1/48



ELEVATION

© 2011 Granite Precasting & Concrete, Inc.

## SPECIFICATIONS

- Concrete:  $F_c = 4,000$  psi @ 28 days
- Rebar: ASTM A-615 Grade 60
- Design: ASTM C-857 "Minimum Structural Design Loading for Underground Precast Concrete Utility Structures"
- Loads: AASHTO HS-20
- Backfill with granular free draining material (sand or pea gravel) free of stones or cobbles greater than 4" in dia.
- Items shown are subject to change without notice.