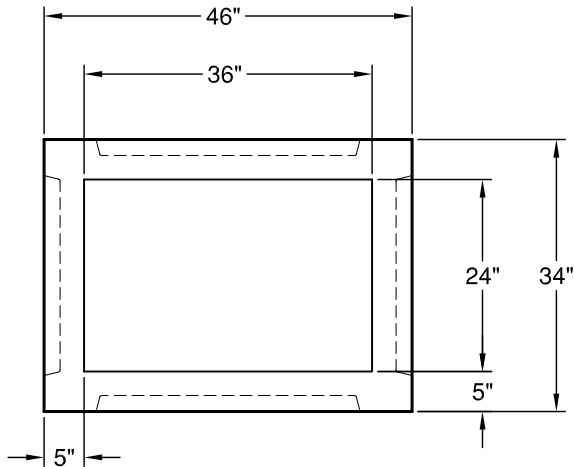
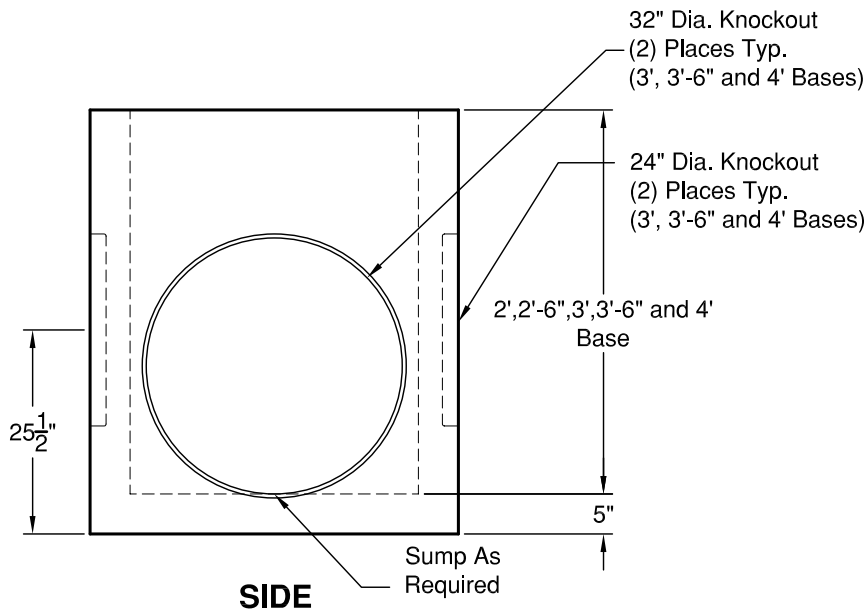
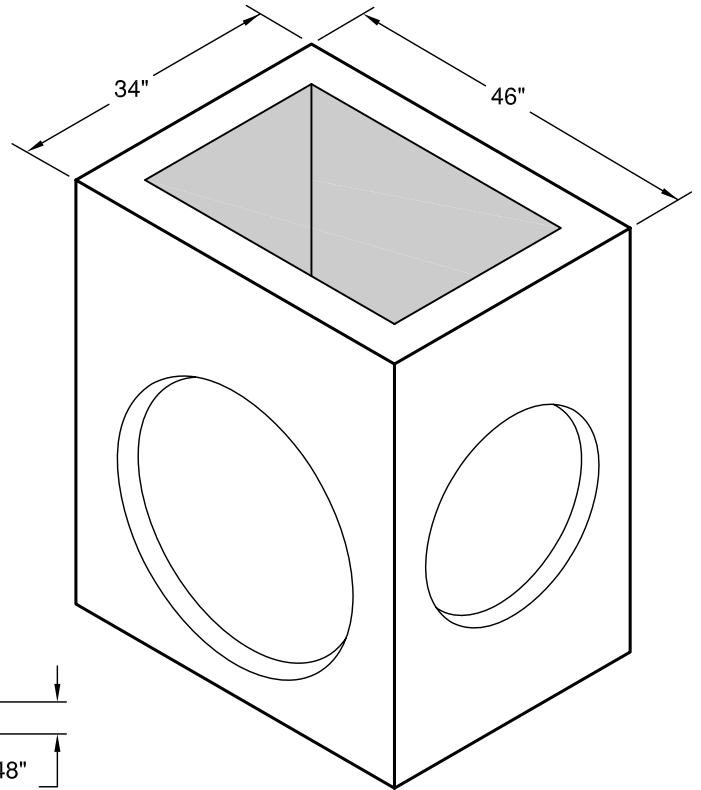
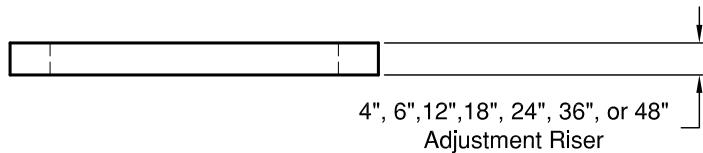


Type A Inlet Box Alaska

Meets or Exceeds AKDOT Standard Plan D-26.02
Constructed in Accordance with ASTM C-478



PLAN



WEIGHTS:

RISER:	4" - 245 lbs
	6" - 368 lbs
	12" - 735 lbs
	18" - 1,103 lbs
	24" - 1,471 lbs
	36" - 2,206 lbs
	48" - 2,940 lbs
BASE:	2' - 2,140 lbs
	2'-6" - 2,505 lbs
	3' - 2,870 lbs
	3'-6" - 3,235 lbs
	4' - 3,600 lbs

CONCRETE:

Fc= 4,000 psi @ 28 Days

REINFORCING STEEL:

Rebar ASTM A615 Grade 60
0.12 Sq in./lin ft min.
No Reinforcement

PIPE PENETRATIONS:

Standard Knockouts (4)
In 3', 3'-6" and 4' Bases

© 2011 Granite Precasting & Concrete, Inc.



GRANITE™

**PRECASTING &
CONCRETE INC.**

4116 BAKERVIEW SPUR • BELLINGHAM, WA 98226 • (360) 671-2251 • 1-800-808-2251 • FAX: (360) 671-0780