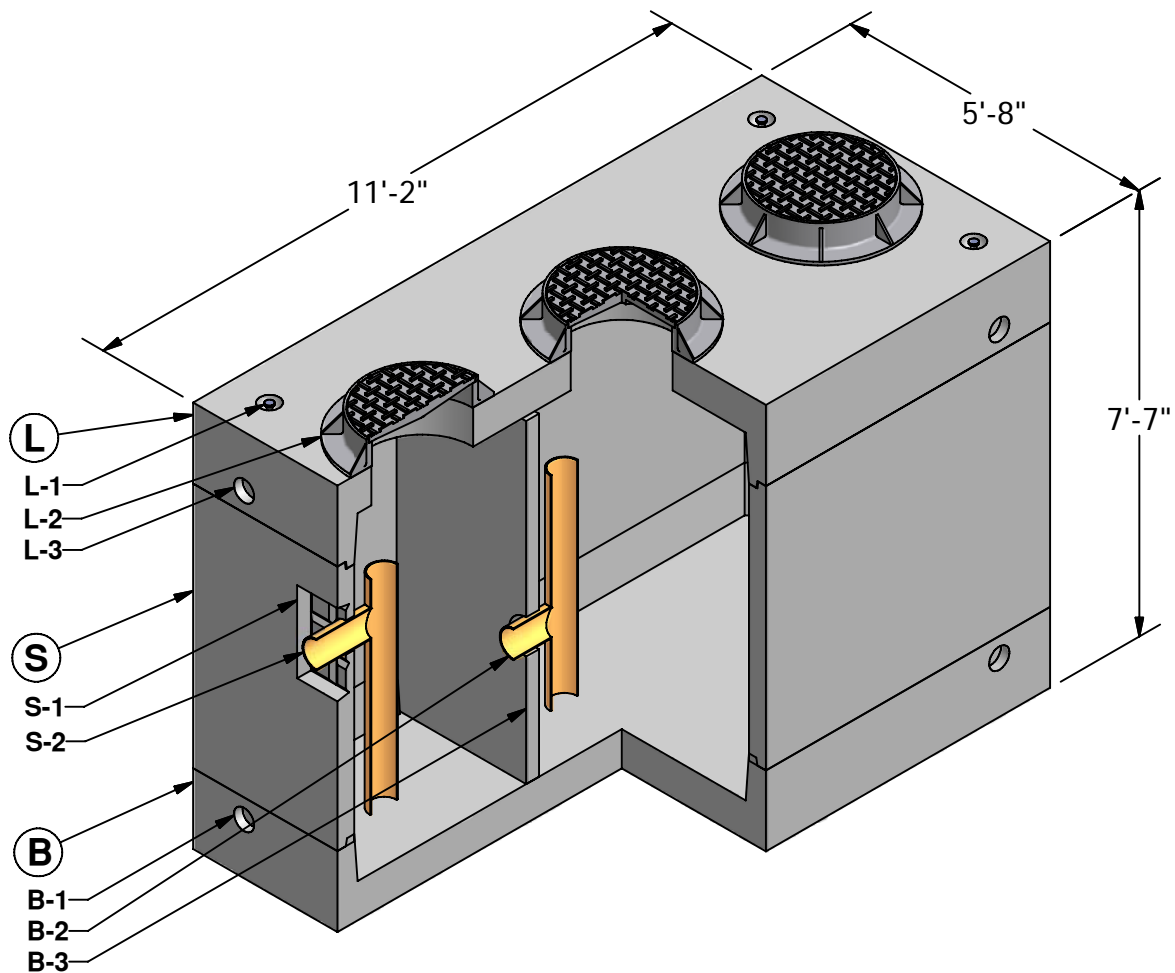


# 5 x 10 Grease Interceptor

1,500 Gallon  
Capacity



**(L) LID (6,680 lbs)**

- L-1. LIFTING INSERT
- L-2. 24" DIA. RING & COVER
- L-3. 4 3/4" DIA. KNOCKOUT

**(S) SECTION (10,180 lbs)**

- S-1. 1'-6" x 1'-6" KNOCKOUT
- S-2. OUTLET PIPE AND TEE (BY OTHERS)

**(B) BASE (7,620 lbs)**

- B-1. 4 3/4" DIA. KNOCKOUT
- B-2. INSPECTION TEE (BY OTHERS)
- B-3. BAFFLE



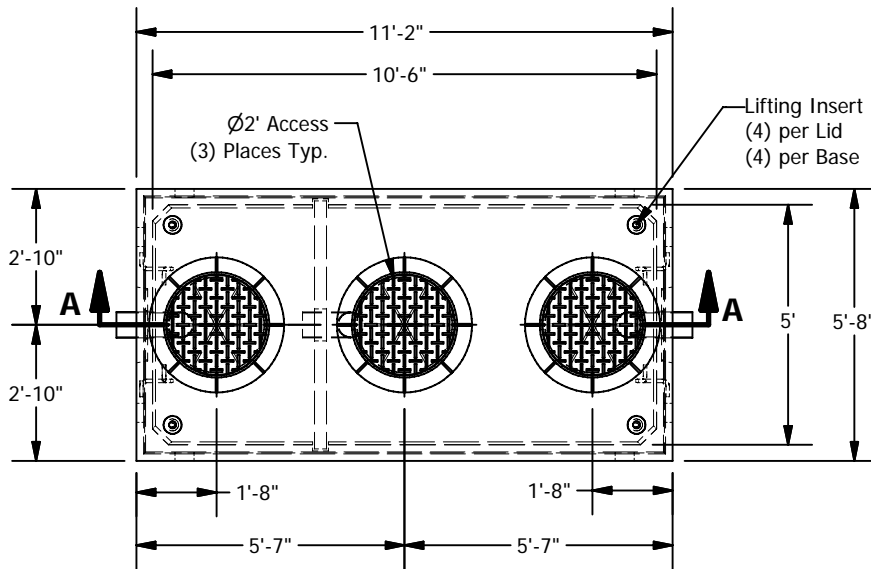
**GRANITE™**

**PRECASTING &  
CONCRETE INC.**

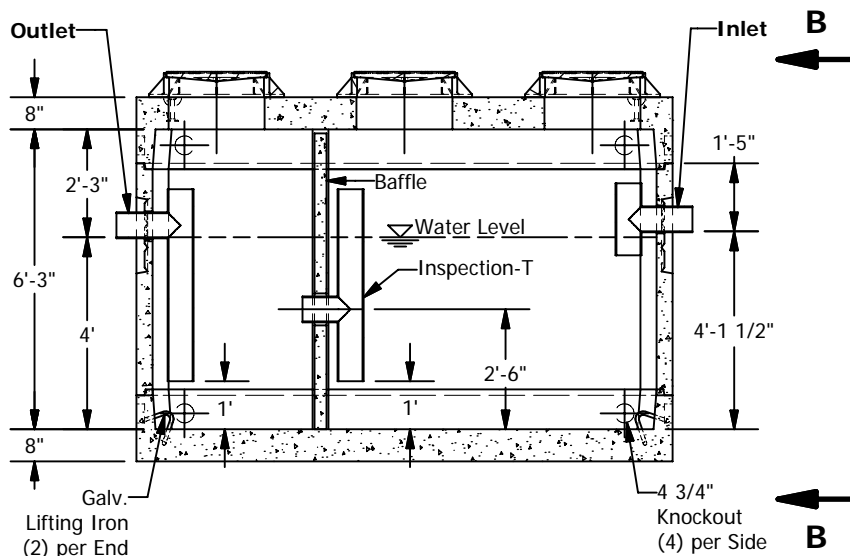
4116 BAKERVIEW SPUR • BELLINGHAM, WA. 98226 • (360) 671-2251 • 1-800-808-2251 • FAX: (360) 671-0780

# 5 x 10 Grease Interceptor

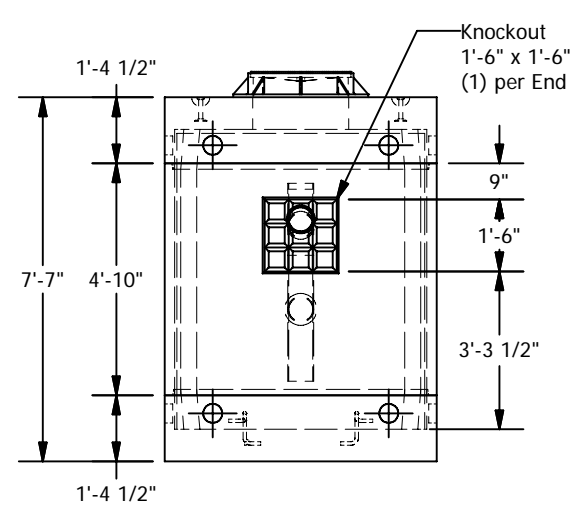
1,500 Gallon Capacity



PLAN



SECTION A-A



VIEW B-B

## SPECIFICATIONS

- Concrete:  $F_c=5,000$  psi @ 28 days
- Rebar: ASTM A-615 Grade 60
- Design: ASTM C-857 "Minimum Structural Design Loading for Underground Precast Concrete Utility Structures"
- Loads: AASHTO HS-20
- Backfill with granular free draining material (sand or pea gravel) free of stones or cobbles greater than 4" dia.
- All pipe to be supplied and installed by contractor.
- Contractor to field install baffle.
- Fill with clean water prior to start up.
- Items shown are subject to change without notice.