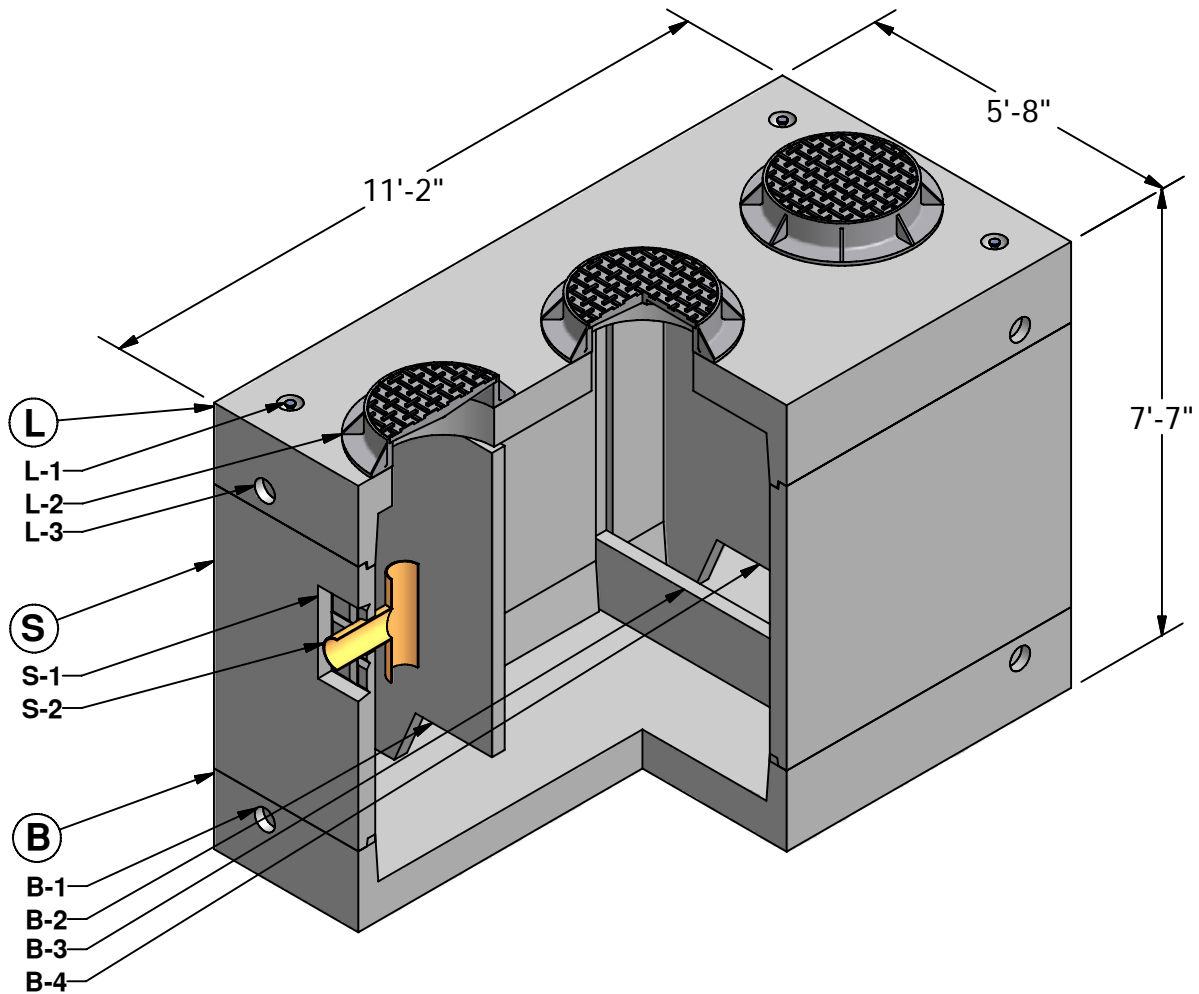


5 x 10 Oil Water Separator

1,500 Gallon
Capacity



L LID (6,680 lbs)

L-1. LIFTING INSERT
L-2. 24" DIA. RING & COVER
L-3. 4 3/4" DIA. KNOCKOUT

S SECTION (11,380 lbs)

S-1. 1'-6" x 1'-6" KNOCKOUT
S-2. OUTLET PIPE AND TEE (BY OTHERS)

B BASE (7,620 lbs)

B-1. 4 3/4" DIA. KNOCKOUT
B-2. OIL RETAINING BAFFLE
B-3. SLUDGE WEIR
B-4. FLOW DIFFUSER BAFFLE



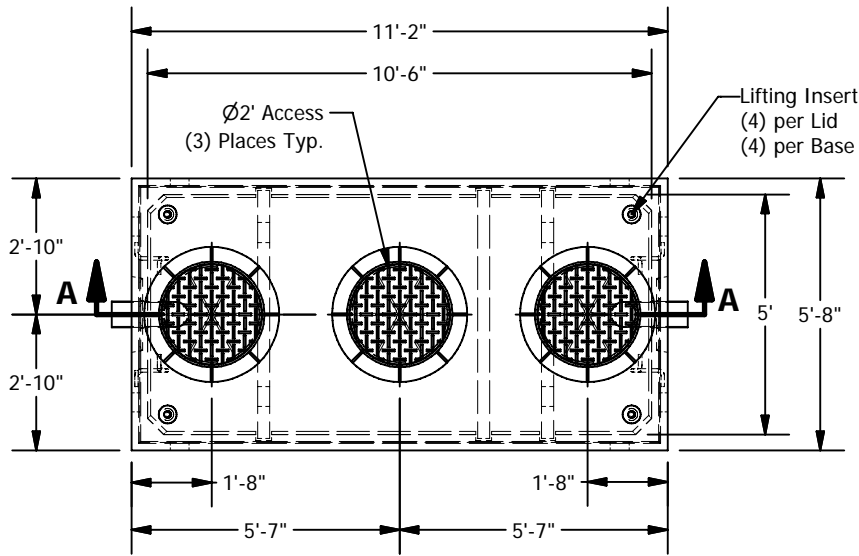
GRANITETM

**PRECASTING &
CONCRETE INC.**

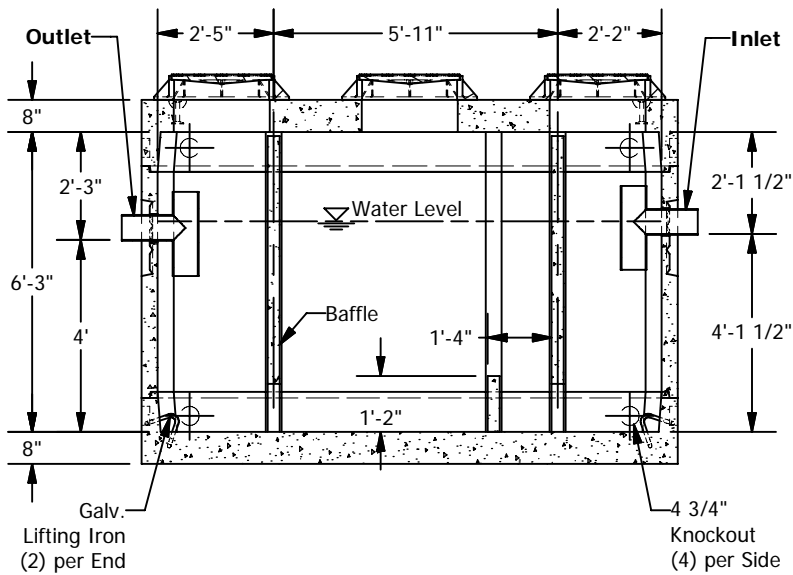
4116 BAKERVIEW SPUR • BELLINGHAM, WA. 98226 • (360) 671-2251 • 1-800-808-2251 • FAX: (360) 671-0780

5 x 10 Oil Water Separator

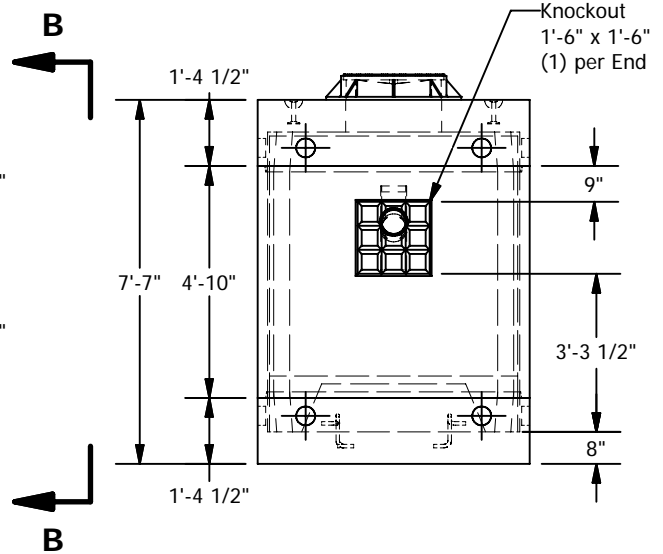
1,500 Gallon Capacity



PLAN



SECTION A-A



VIEW B-B

SPECIFICATIONS

- Concrete: Fc=5,000 psi @ 28 days
- Rebar: ASTM A-615 Grade 60
- Design: ASTM C-857 "Minimum Structural Design Loading for Underground Precast Concrete Utility Structures"
- Loads: AASHTO HS-20
- Backfill with granular free draining material (sand or pea gravel) free of stones or cobbles greater than 4" dia.
- All pipe to be supplied and installed by contractor.
- Contractor to field install baffle.
- Fill with clean water prior to start up.
- Items shown are subject to change without notice.