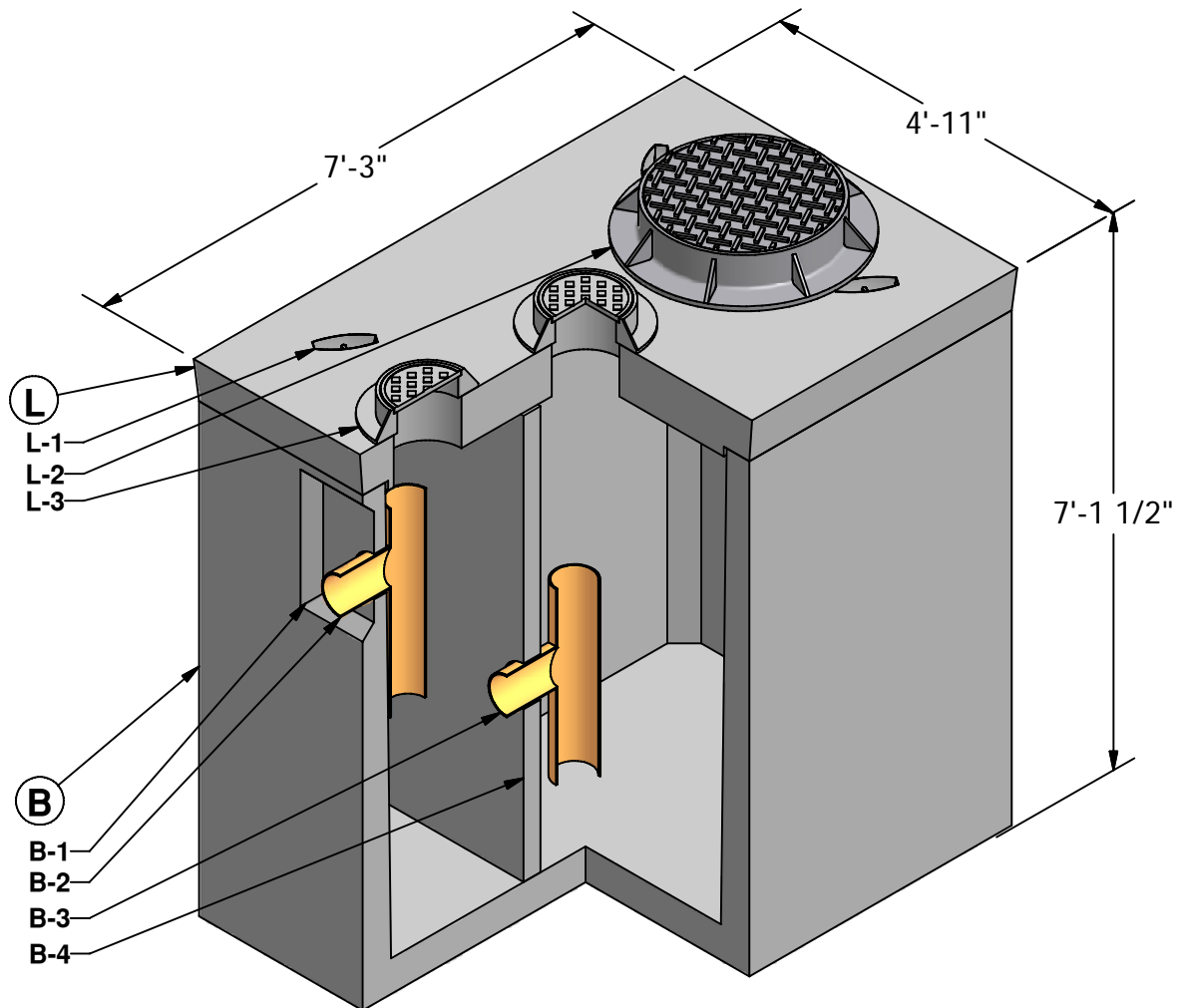


# 5 x 7.7 Grease Interceptor

950 Gallon  
Capacity



Ⓛ LID (2,750 lbs)

- L-1. LIFTING INSERT
- L-2. 24" DIA. RING & COVER (OPTIONAL)
- L-3. INSPECTION COVER (OPTIONAL)

Ⓑ BASE (10,600 lbs)

- B-1. 1'-6" X 1'-5" KNOCKOUT
- B-2. OUTLET PIPE AND TEE (BY OTHERS)
- B-3. INSPECTION TEE (BY OTHERS)
- B-4. BAFFLE



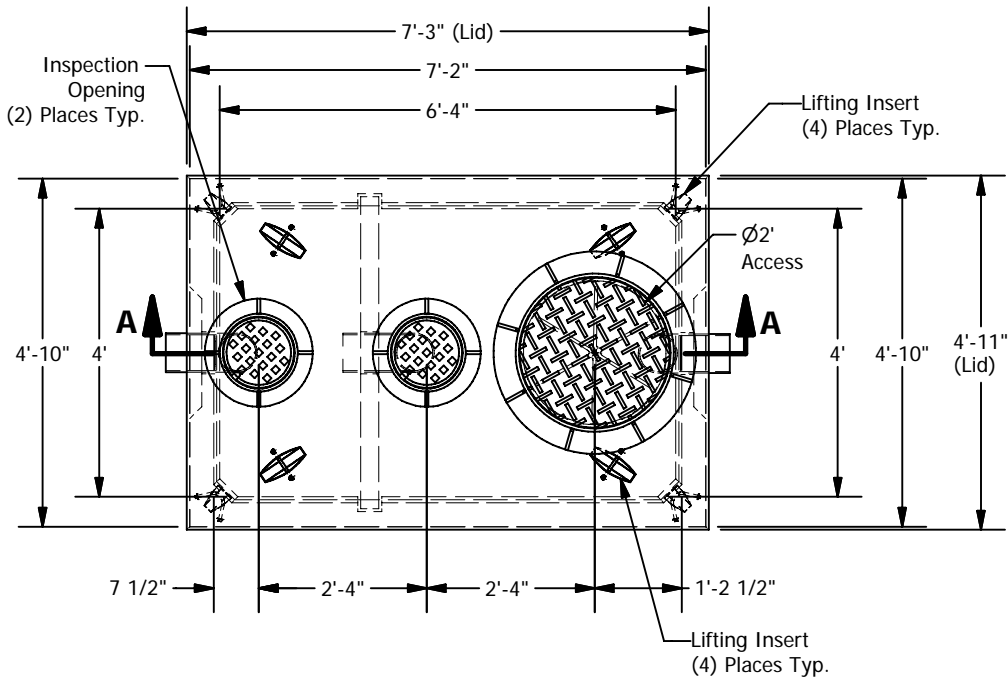
**GRANITE**<sup>TM</sup>

**PRECASTING &  
CONCRETE INC.**

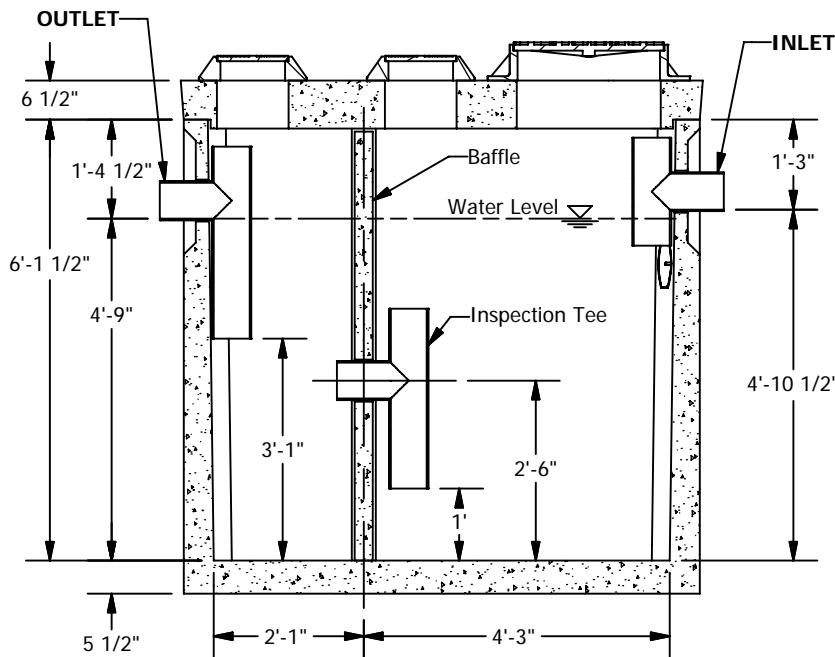
4116 BAKERVIEW SPUR • BELLINGHAM, WA. 98226 • (360) 671-2251 • 1-800-808-2251 • FAX: (360) 671-0780

# 5 x 7.7 Grease Interceptor

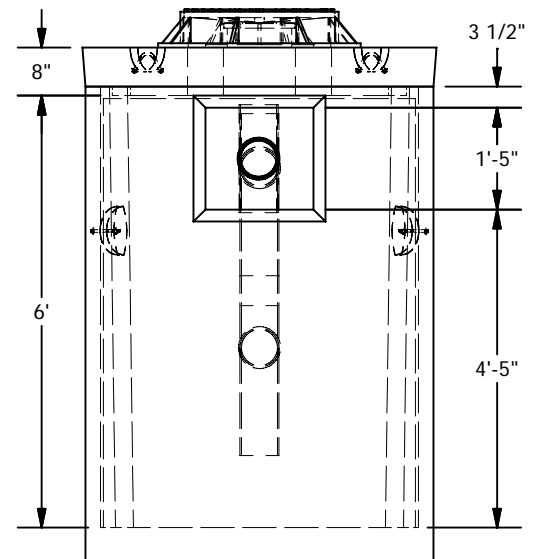
950 Gallon Capacity



**PLAN**



**SECTION A-A**



**END VIEW**

**SPECIFICATIONS**

1. Concrete: Fc=5,000 psi @ 28 days
2. Rebar: ASTM A-615 Grade 60
3. Design: ASTM C-857 "Minimum Structural Design Loading for Underground Precast Concrete Utility Structures"
4. Loads: AASHTO HS-20
5. Backfill with granular free draining material (sand or pea gravel) free of stones or cobbles greater than 4" dia.
6. All pipe to be supplied and installed by contractor.
7. Contractor to field install baffle.
8. Fill with clean water prior to start up.
9. Items shown are subject to change without notice.