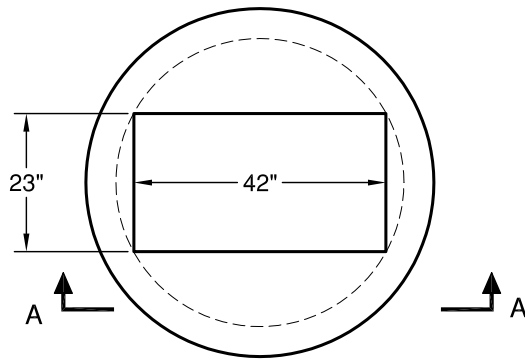
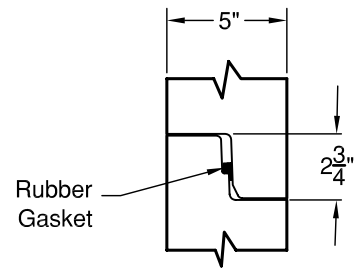


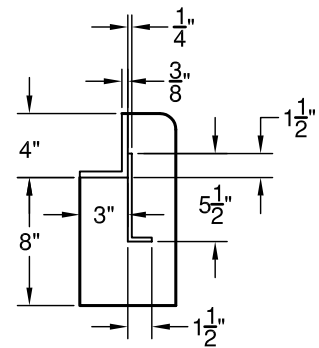
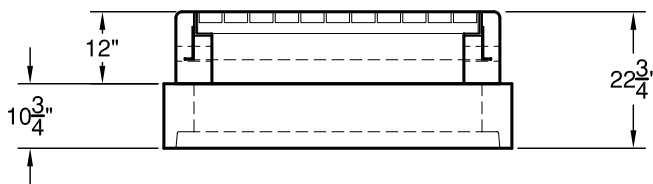
WSDOT H-Slab



TOP SLAB

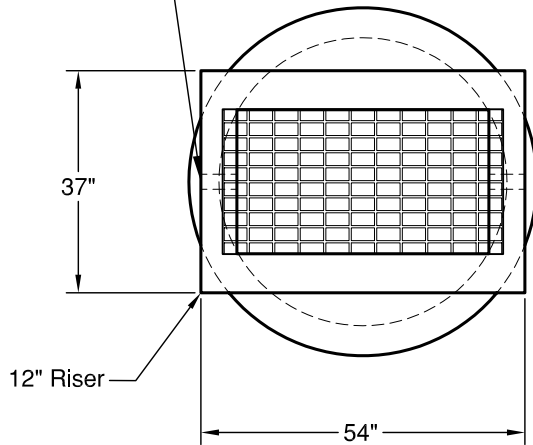


**JOINT DETAIL
MANHOLE COVER**



**FRAME DETAIL
1:12 SCALE**

Pick Eye
(2) Places Typ.



TYP 1 GRATE INLET TOP (ON TOP SLAB)

WEIGHTS:

- 48" Dia. Top Slab: 1,300 lbs
- 54" Dia. Top Slab: 1,660 lbs
- 60" Dia. Top Slab: 2,380 lbs
- 72" Dia. Top Slab: 3,340 lbs
- 54" X 37" Riser
- Grate and Cover: 1,250 lbs

CONCRETE:

Fc= 4,000 psi @ 28 Days

REINFORCING STEEL:

Welded Wire Fabric: ASTM A 497
Rebar: ASTM A615 Grade 60



GRANITE

**PRECASTING &
CONCRETE INC.**