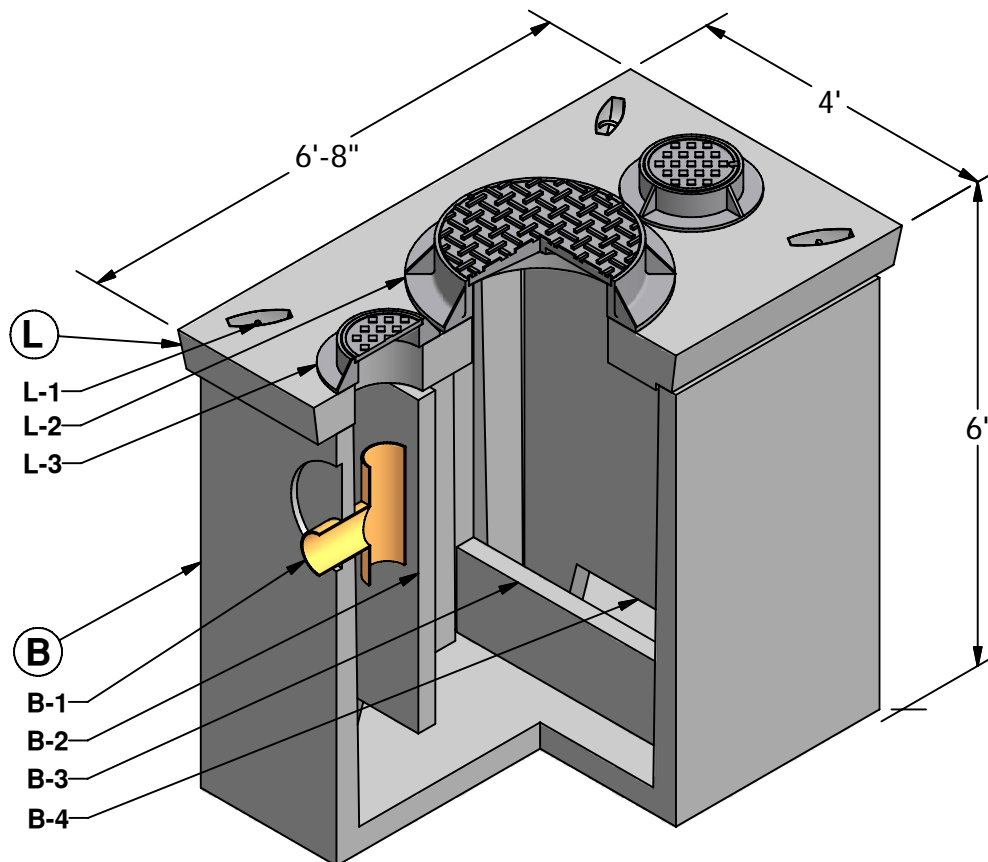


# 6 x 4 Oil Water Separator

450 Gallon  
Capacity



**(L)** LID (1,400 lbs)

- L-1. UTILITY ANCHOR
- L-2. 24" DIA. RING & COVER (OPTIONAL)
- L-3. INSPECTION COVER (OPTIONAL)

**(B)** BASE (6,720 lbs)

- B-1. OUTLET PIPE AND TEE (BY OTHERS)
- B-2. OIL RETAINING BAFFLE
- B-3. SLUDGE WEIR
- B-4. FLOW DIFFUSER BAFFLE



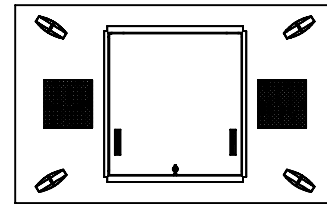
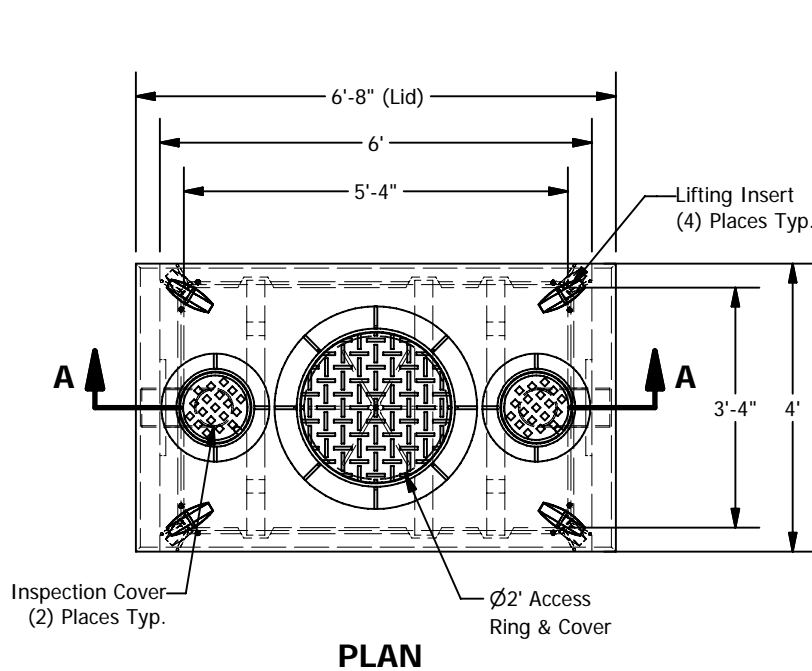
**GRANITE™**

**PRECASTING &  
CONCRETE INC.**

4116 BAKERVIEW SPUR • BELLINGHAM, WA. 98226 • (360) 671-2251 • 1-800-808-2251 • FAX: (360) 671-0780

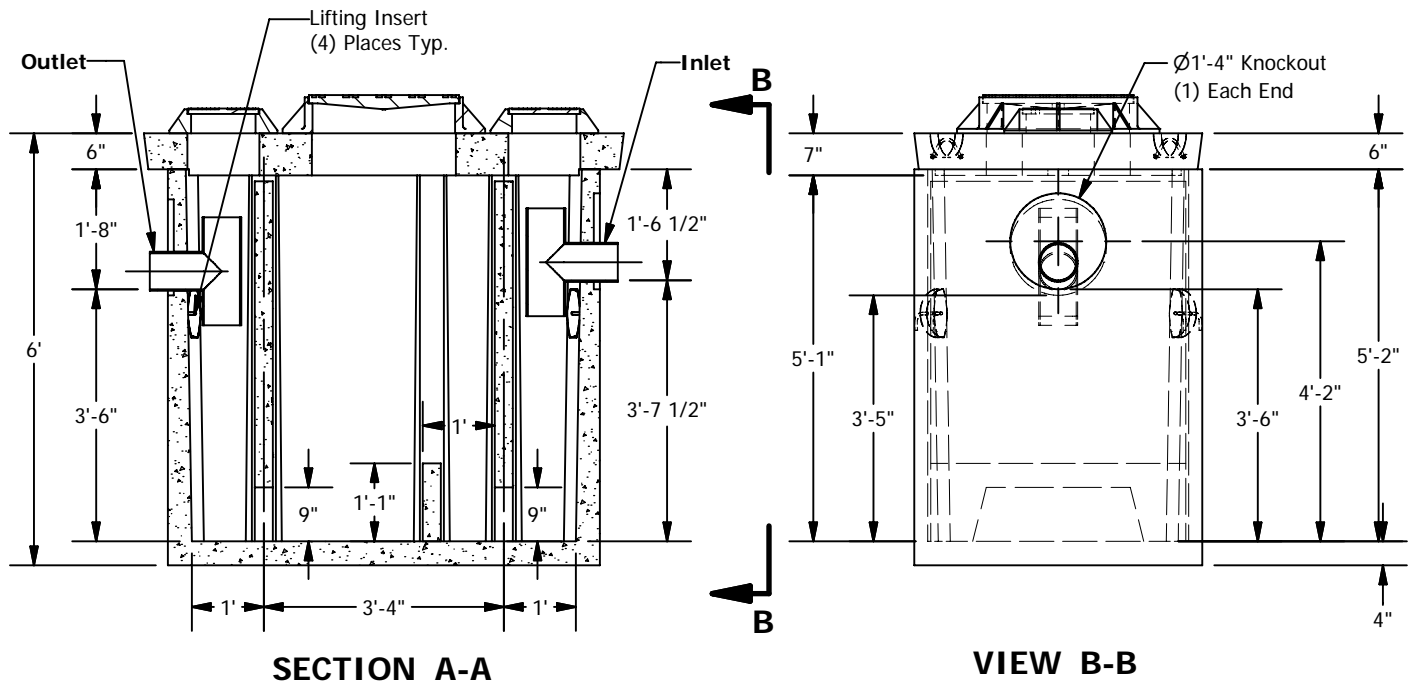
# 6 x 4 Oil Water Separator

450 Gallon Capacity



4' x 6' Lid  
w/ 3' x 3' Hatch  
and 12" x 12"  
Cast Iron  
Inspection  
Covers

**LID OPTION**



**SPECIFICATIONS**

1. Concrete: Fc=5,000 psi @ 28 days
2. Rebar: ASTM A-615 Grade 60
3. Design: ASTM C-857 "Minimum Structural Design Loading for Underground Precast Concrete Utility Structures"
4. Loads: AASHTO HS-20
5. Backfill with granular free draining material (sand or pea gravel) free of stones or cobbles greater than 4" dia.
6. All pipe to be supplied and installed by contractor.
7. Contractor to field install baffle.
8. Fill with clean water prior to start up.
9. Items shown are subject to change without notice.