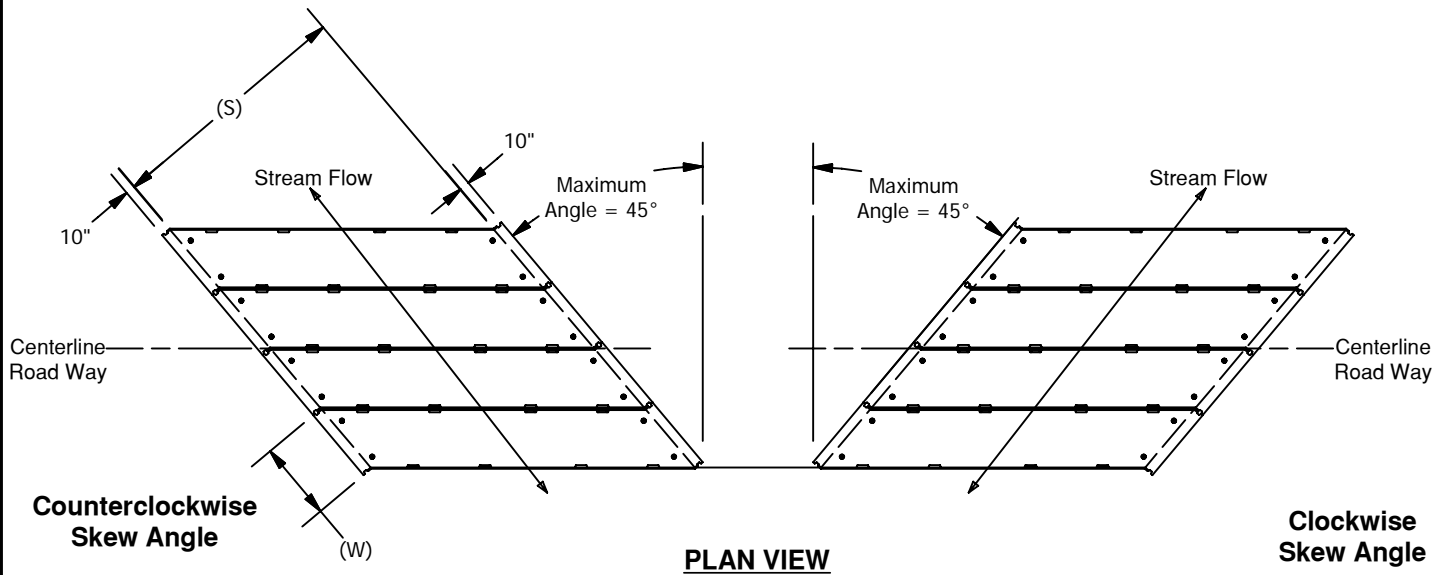
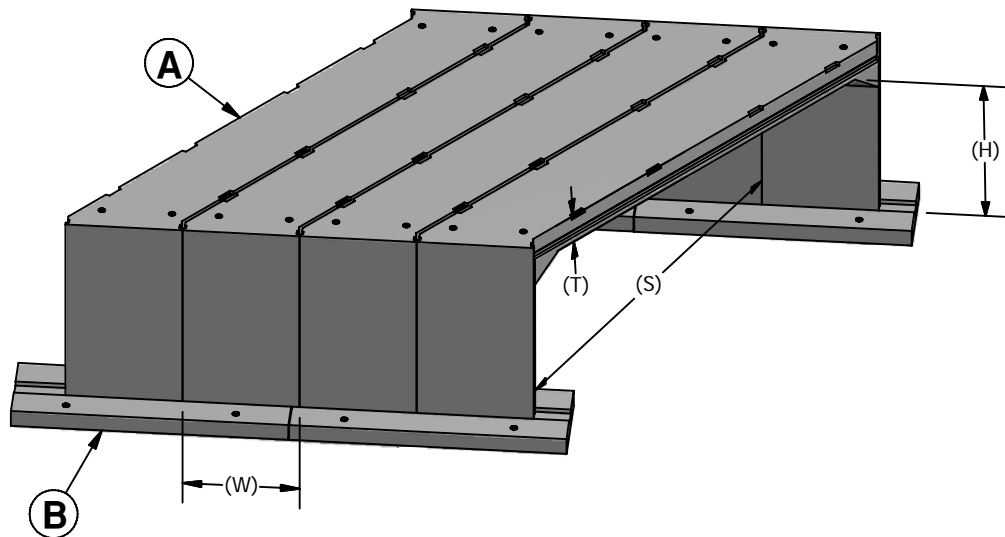


# Skewed Short Span Bridge



- (W) VARIABLE WIDTH - STANDARD 5' WIDTH
- (T) VARIABLE DECK THICKNESS
- (H) VARIABLE HEIGHT - (I.D.) - 10' MAX.
- (S) VARIABLE CLEAR SPAN - (I.D.) - 12' to 33' MAX.



- (A)** SKEWED SHORT SPAN BRIDGE
- (B)** OPTIONAL FOOTING  
or FULL BASE SLAB

## STRUCTURAL NOTES:

1. CONCRETE STRENGTH -  $F_c' = 5,000$  psi @ 28 Days  
 $F_c'$  = Recommended Stripping Strength - 3,000 psi
2. REINFORCING - ASTM-615 GRADE 60
3. DESIGN LOAD - AASHTO HS-20
4. DESIGN FILL - 0' Min. to 2' Max. Cover
5. MATERIALS AND MANUFACTURING PER ASTM C789-95N

© 2011 Granite Precasting & Concrete, Inc.



# GRANITE™

# PRECASTING & CONCRETE INC.

4116 BAKERVIEW SPUR • BELLINGHAM, WA. 98226 • (360) 671-2251 • 1-800-808-2251 • FAX: (360) 671-0780