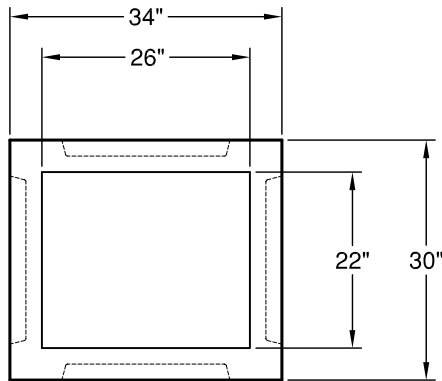
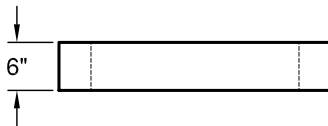


Type 1 Catch Basin

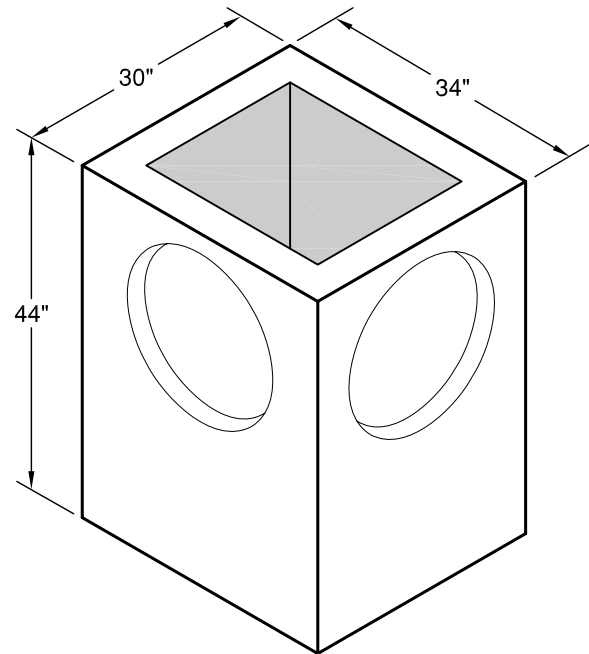
Meets or Exceeds WSDOT Standard Plan B-1
Constructed in Accordance with ASTM C-478



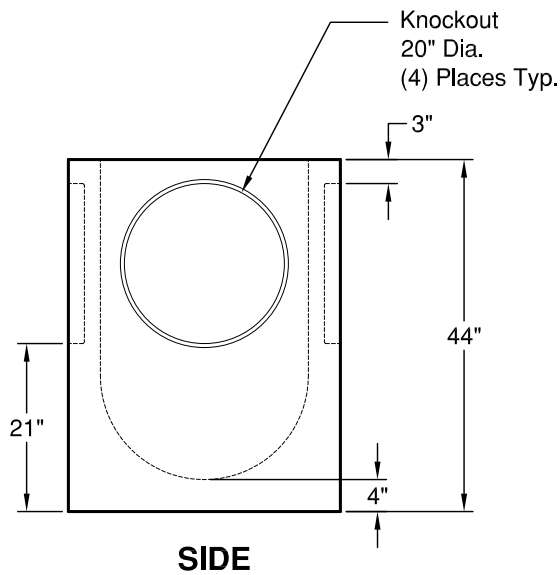
PLAN



TYPE 1 CB RISER



ISO VIEW



SIDE

WEIGHTS:

RISER:	1" -	50 lbs
	2" -	100 lbs
	4" -	180 lbs
	6" -	260 lbs
	12" -	560 lbs
	24" -	1,120 lbs
BASE:		1,800 lbs

CONCRETE:

Fc= 4,000 psi @ 28 Days

REINFORCING STEEL:

Welded Wire Fabric: ASTM A 497
0.12 Sq in./lin ft min.
No Wire Fabric in Knockout

PIPE PENETRATIONS:

Standard Knockouts (4)



GRANITE™ **PRECASTING & CONCRETE INC.**

4116 BAKERVIEW SPUR • BELLINGHAM, WA 98226 • (360) 671-2251 • 1-800-808-2251 • FAX: (360) 671-0780