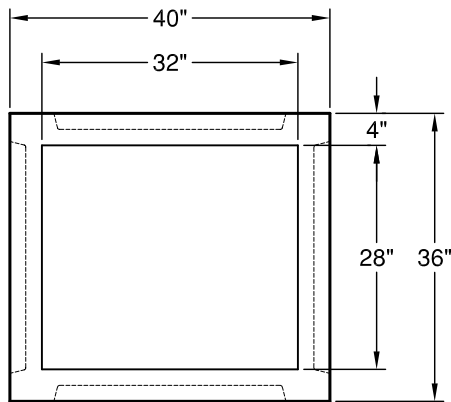
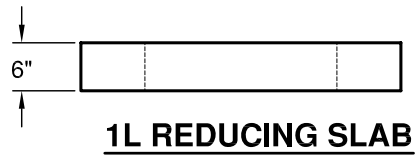
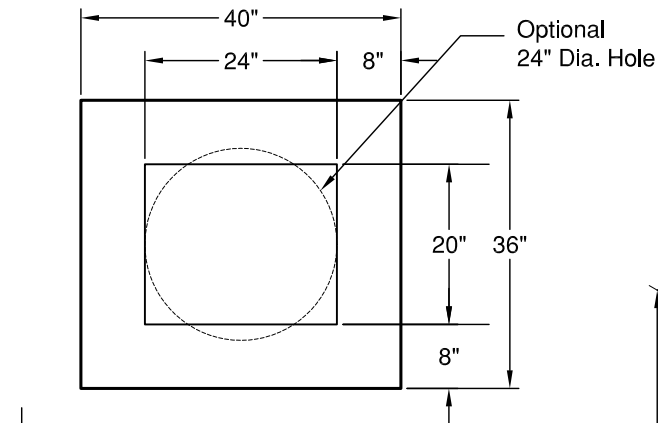
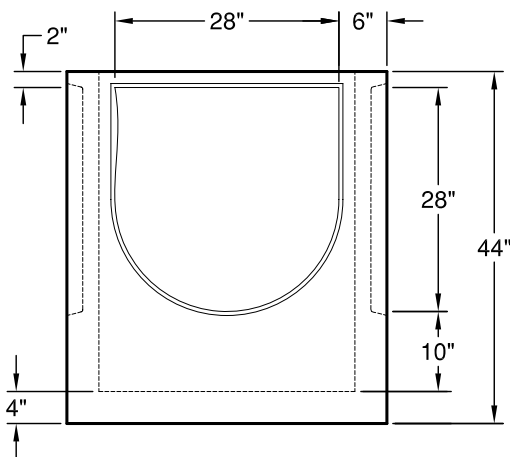


Type 1 L Catch Basin

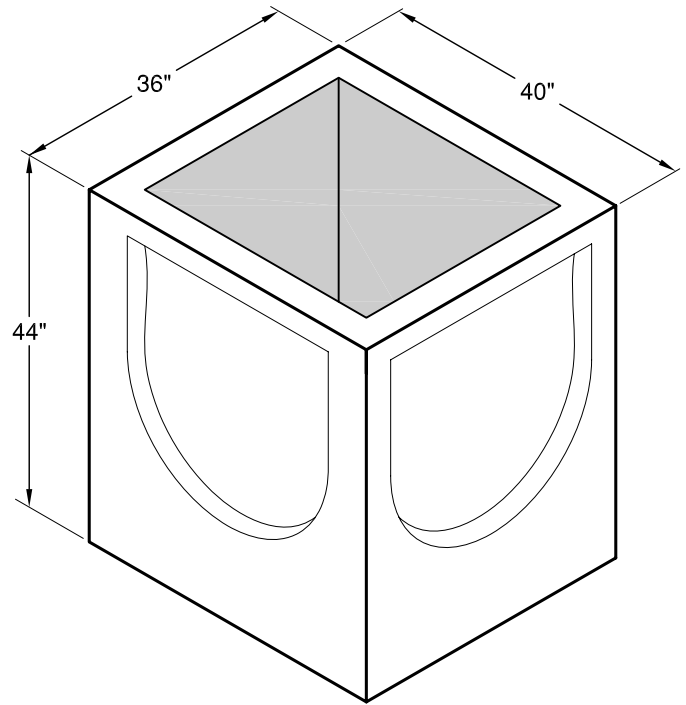
Meets or Exceeds WSDOT Standard Plan B-1a
Constructed in Accordance with ASTM C-478



PLAN



SIDE



ISO VIEW

WEIGHTS:

BASE: 2,240 lbs
REDUCING SLAB: 500 lbs

CONCRETE:

F_c = 4,000 psi @ 28 Days

REINFORCING STEEL:

Welded Wire Fabric: ASTM A 497
0.12 Sq in./lin ft min.
No Wire Fabric in Knockout

PIPE PENETRATIONS:

Standard Knockouts (4)



GRANITE™

**PRECASTING &
CONCRETE INC.**

4116 BAKERVIEW SPUR • BELLINGHAM, WA 98226 • (360) 671-2251 • 1-800-808-2251 • FAX: (360) 671-0780