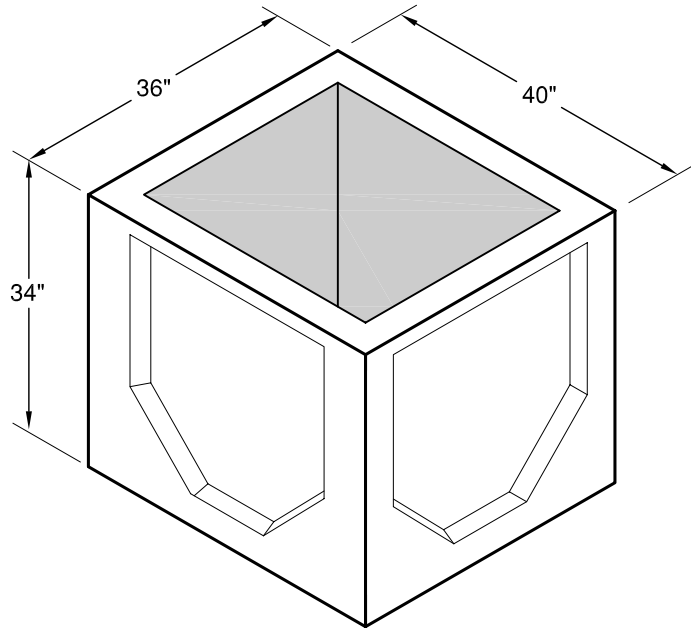
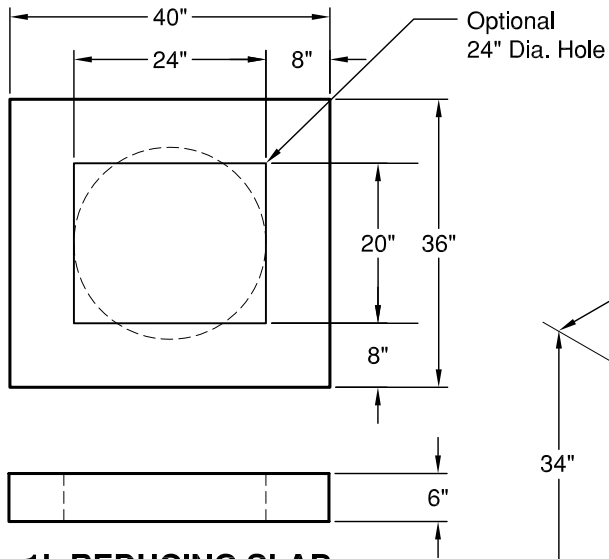
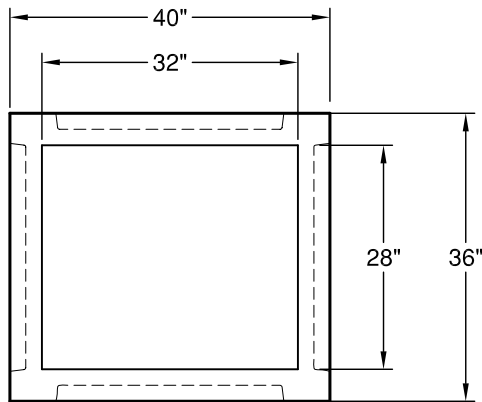


# Type 1 L Special

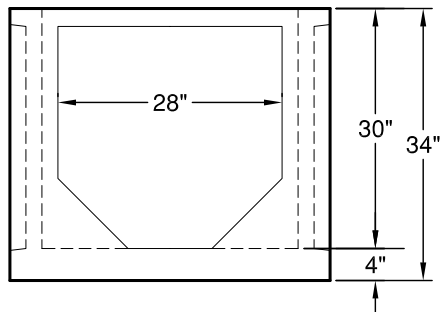
Constructed in Accordance with ASTM C-478



**ISO VIEW**



**PLAN**



**SIDE**

**WEIGHTS:**

BASE: 1,620 lbs  
REDUCING SLAB: 500 lbs

**CONCRETE:**

$F_c = 4,000$  psi @ 28 Days

**REINFORCING STEEL:**

Welded Wire Fabric: ASTM A 497  
0.12 Sq in./lin ft min.  
No Wire Fabric in Knockout

**PIPE PENETRATIONS:**

Standard Knockouts (4)

© 2011 Granite Precasting & Concrete, Inc.



**GRANITE™ PRECASTING & CONCRETE INC.**

4116 BAKERVIEW SPUR • BELLINGHAM, WA 98226 • (360) 671-2251 • 1-800-808-2251 • FAX: (360) 671-0780