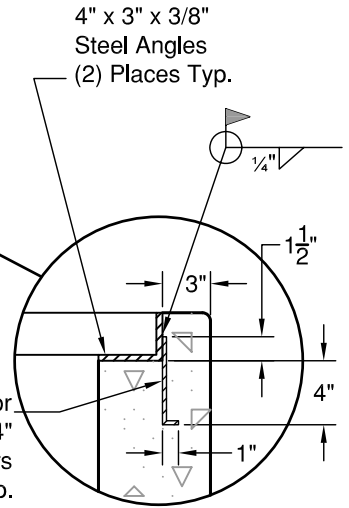
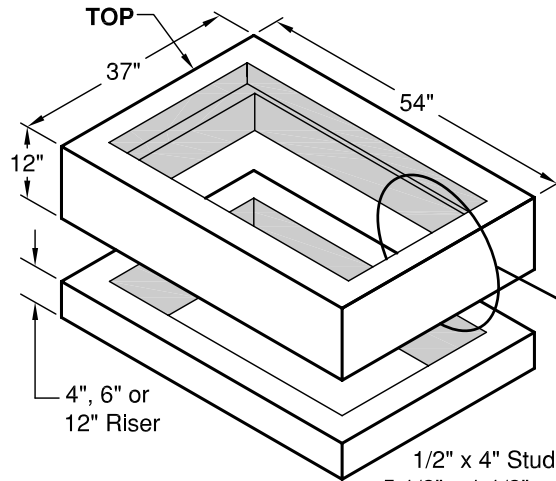
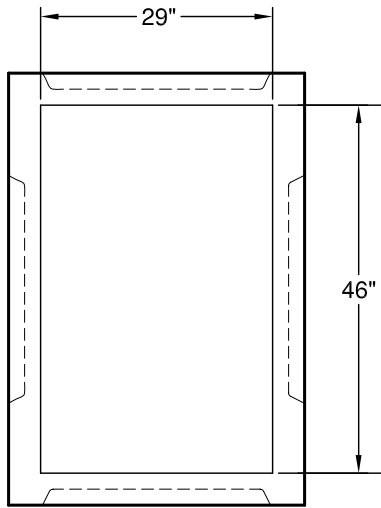
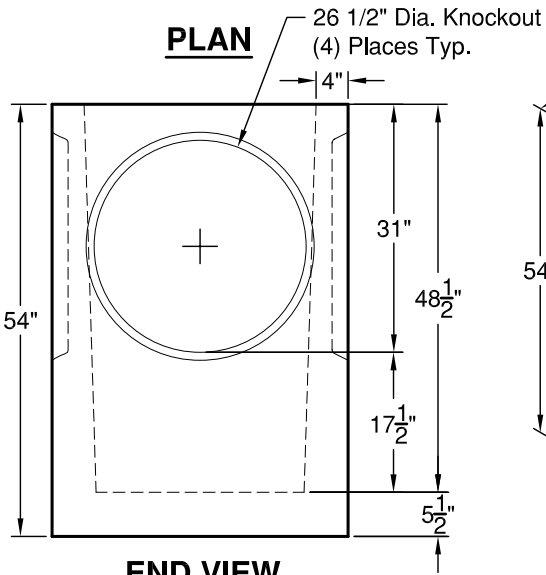


# Type 2 Grate Inlet

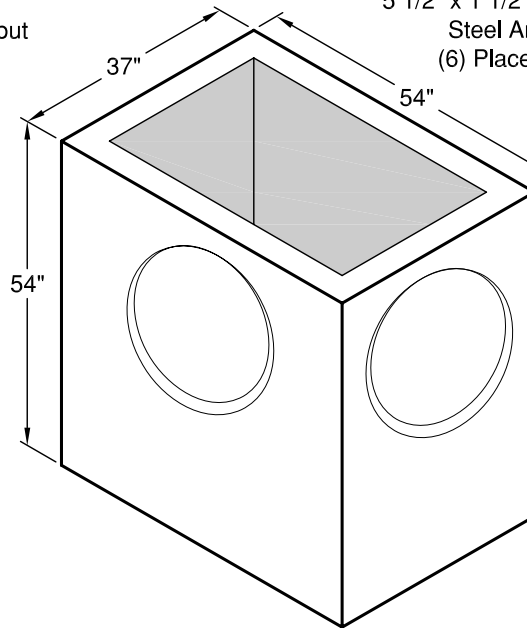
Grates Conform to WSDOT Standard Plan B-40.20-00  
 Grates Conform to WSDOT Standard Plan B-40.40-00  
 Inlet Conform to WSDOT Standard Plan B-35.40-00  
 Constructed in Accordance with ASTM C-478



## PLAN



## END VIEW



## DETAIL

### WEIGHTS:

|                    |             |
|--------------------|-------------|
| BASE:              | 3,800 lbs   |
| 4" RISER:          | 285 lbs     |
| 6" RISER:          | 425 lbs     |
| 12" RISER:         | 850 lbs     |
| 12" TOP w/ ANGLES: | 1,060 lbs   |
| GRATES:            | (SEE BELOW) |

### CONCRETE:

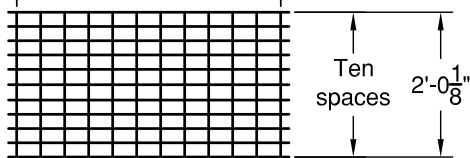
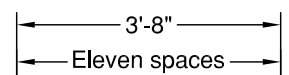
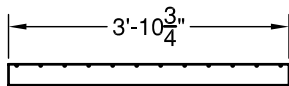
Fc= 4,000 psi @ 28 Days

### REINFORCING STEEL:

Rebar: ASTM A615 Grade 60

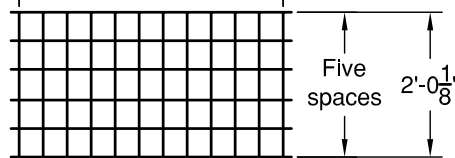
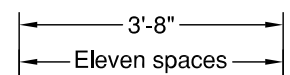
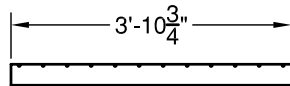
### PIPE PENETRATIONS:

Standard Knockouts all Sides



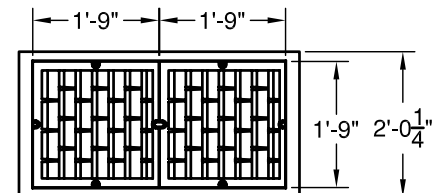
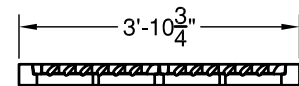
### TYPE A GRATE

(Weight approximately 200 lbs)



### TYPE B GRATE

(Weight approximately 200 lbs)



### DUAL VANED GRATE

(Weight approximately 500 lbs)

© 2011 Granite Precasting & Concrete, Inc.



# GRANITE™

# PRECASTING & CONCRETE INC.

4116 BAKERVIEW SPUR • BELLINGHAM, WA 98226 • (360) 671-2251 • 1-800-808-2251 • FAX: (360) 671-0780