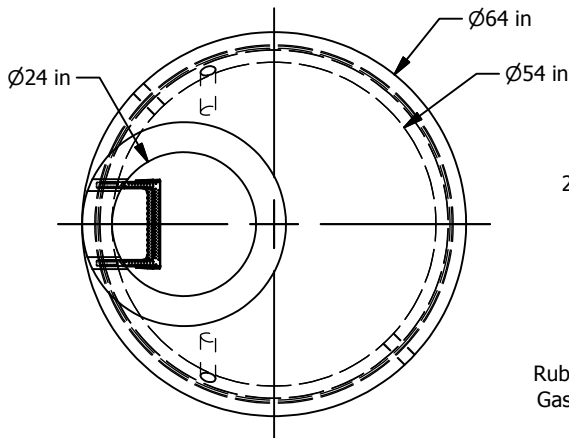
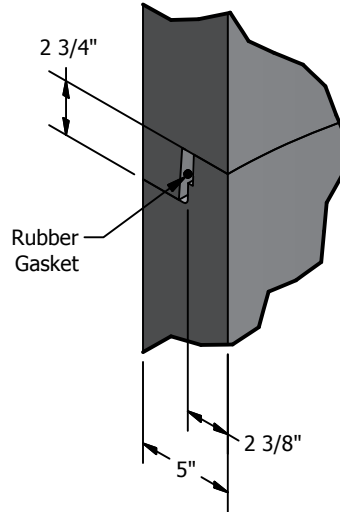


# 54" Type 1 Manhole

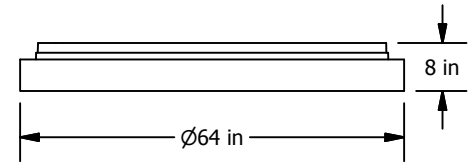
Meets or Exceeds WSDOT Std Plan B-15.20-01  
 Manholes Constructed in Accordance With ASTM C-478  
 Rubber Gasket Conforms to ASTM C-443  
 Polypropylene MH Steps Conform to ASTM C-478



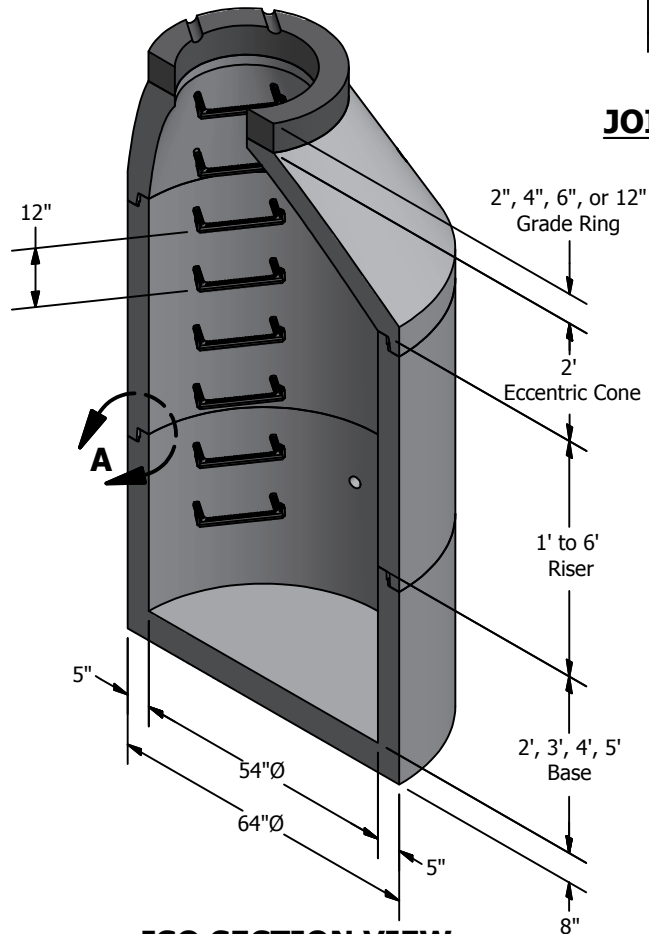
**PLAN**



**JOINT DETAIL A**  
**SCALE 1/8**



**BASE SLAB**



**ISO SECTION VIEW**

**WEIGHTS:**

ECCENTRIC CONE:	2' - 1,840 lbs
RISER:	1' - 960 lbs
	2' - 1,900 lbs
	3' - 2,900 lbs
	4' - 3,800 lbs
	5' - 4,700 lbs
	6' - 5,800 lbs
BASE:	2' - 4,060 lbs
	3' - 4,960 lbs
	4' - 5,860 lbs
	5' - 6,760 lbs
BASE SLAB:	8" - 2,560 lbs

**CONCRETE:**

Fc= 4,000 psi @ 28 Days

**REINFORCING STEEL:**

Welded Wire Fabric: ASTM A497  
 Rebar: ASTM A615 Grade 60  
 Base Wall, Cone & Riser: 0.15 Sq in./ft. e.w. min.  
 Base Floor & Base Slab: 0.23 Sq in./ft. e.w. min.

**PIPE PENETRATIONS:**

Maximum Hole Size: 42"  
 Minimum Distance Hole to Hole: 8"  
 Holes Cored to Plan Specifications  
 Kor-N-Seal Connections Available  
 Standard Knockouts Available

**SITE PENETRATIONS:**

Contractor to Establish Level Grade  
 Prior to Setting Base Piece at a  
 Tolerance of 1/4" to 3/8"

© 2013 Granite Precasting & Concrete, Inc.



4116 BAKERVIEW SPUR, BELLINGHAM, WA 98226 - (360) 671-2251 - 1-800-808-2251 - FAX: (360) 671-0780