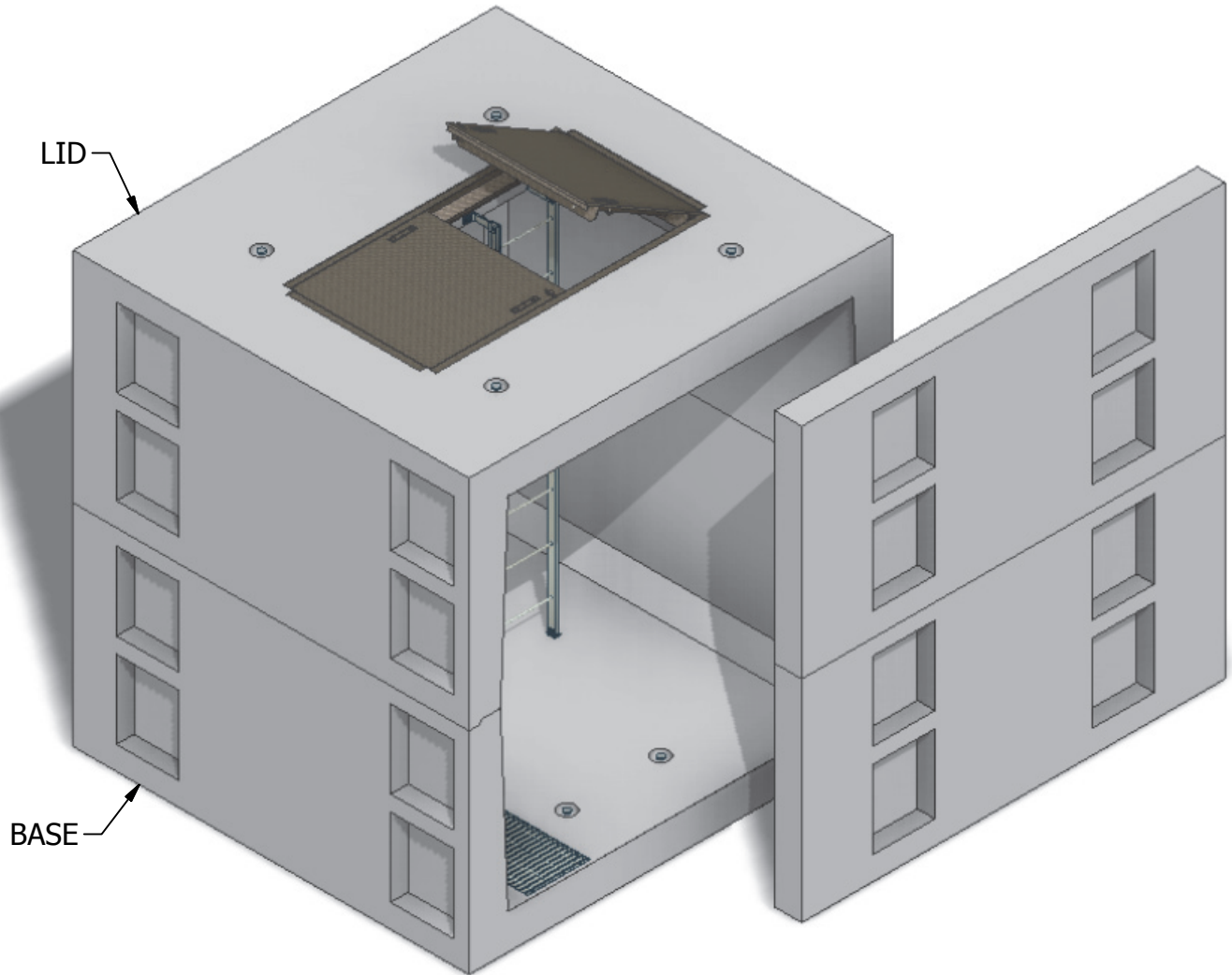


# 8 x 8 Meter Vault



INTERIOR DIMENSIONS:  
8'W x 8'L x 8'H

WEIGHTS:  
LID (18,030 lbs)  
BASE (18,440 lbs)

NOTE: Side panel has been shifted to show internal view and is not removable.

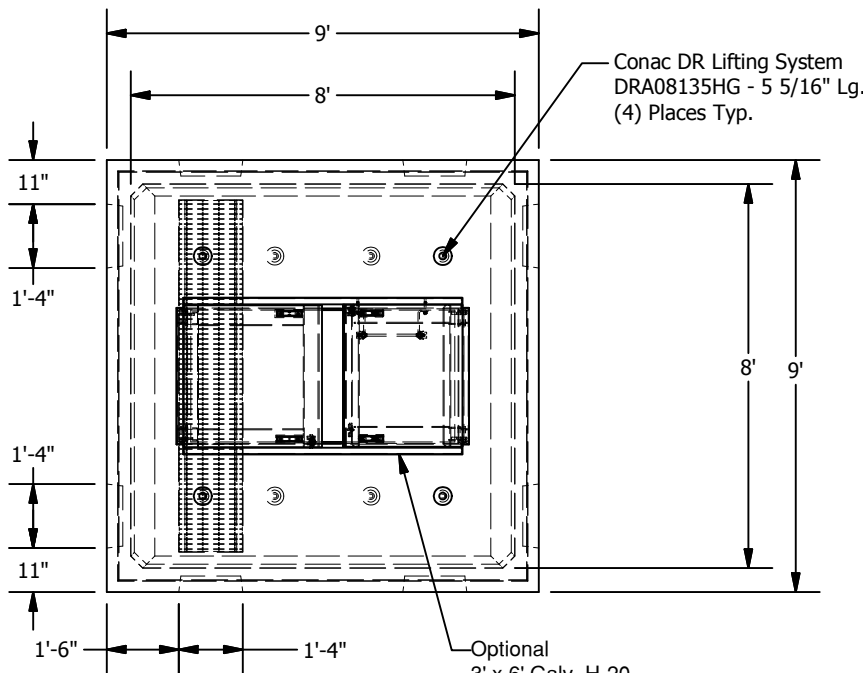
© 2013 Granite Precasting & Concrete, Inc.



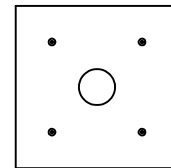
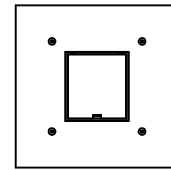
**GRANITE**™  
**PRECAST**

4116 BAKERVIEW SPUR, BELLINGHAM, WA 98226 - (360) 671-2251 - 1-800-808-2251 - FAX: (360) 671-0780

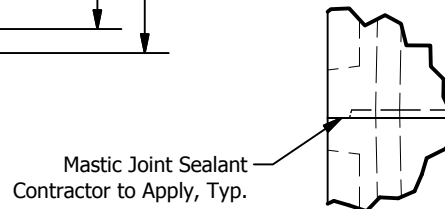
# 8 x 8 Meter Vault



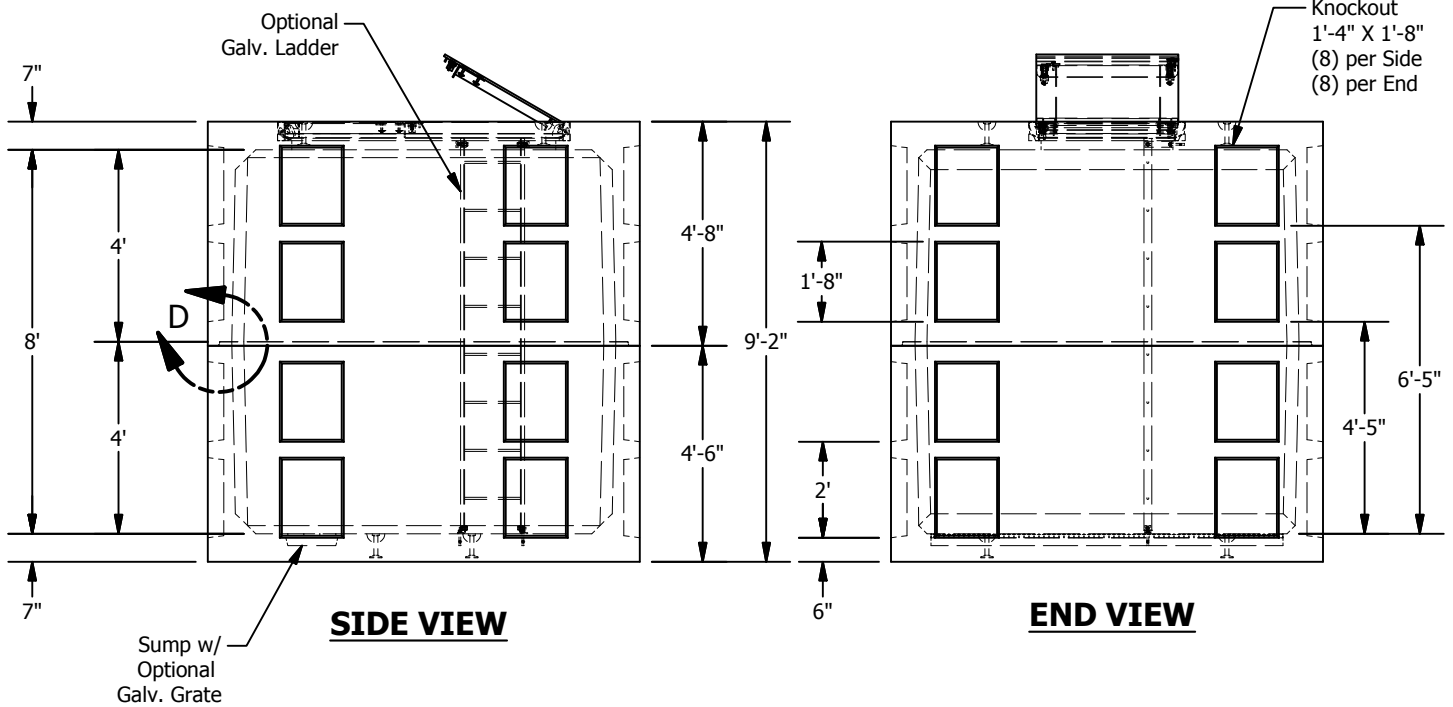
**PLAN**



**LID OPTIONS**



**JOINT DETAIL D  
SCALE 1 / 24**



**SIDE VIEW**

**END VIEW**

© 2013 Granite Precasting & Concrete, Inc.

**SPECIFICATIONS**

- Concrete: Fc=5,000 psi @28 days
- Rebar: ASTM A-615 Grade 60
- Design: ASTM C-857 "Minimum Structural Design Loading for Underground Precast Concrete Utility Structures"
- Loads: AASHTO HS-20
- Backfill with granular free draining material (sand or pea gravel) free of stones or cobbles greater than 4" in dia.
- Install lid prior to backfill.
- Items shown are subject to change without notice.